

Recombinant WEE1 protein

Catalog No: 31201

Expressed In: Baculovirus

Quantity: 10 µg

Source: Human

Buffer Contents: 10 µg of Recombinant WEE1 protein in 50 mM Tris-HCl, pH 8.0; 100 mM NaCl, 5 mM DTT, 15 mM reduced glutathione, 20% glycerol. Protein is supplied at 0.15 µg/µl.

Protein Details: Recombinant human WEE1 protein was produced using baculovirus infected Sf9 cells. The protein was made against amino acids Q250-Y646, accession number X62048 and N-terminally fused to GST-HIS6-Thrombin cleavage site. Purified by GSH-agarose affinity purification.

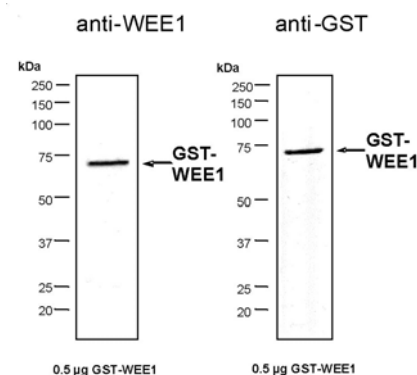
Application Notes: Recombinant WEE1 is suitable for kinase assays and Western blot. The molecular weight of the protein is ~74.902 kDa. The activity of the protein is ~ 1 pmol/µg min.

Recommended kinase reaction conditions: 60 mM HEPES-NaOH, pH 7.5, 3 mM MgCl₂, 3 mM MnCl₂, 3 µM Na-orthovanadate, 1.2 mM DTT, ATP (variable), 2.5 µg/50 µl PEG20.000, Substrate: PolyAEKY, 1.5 µg / 50 µl, Recombinant WEE1: 400 ng/50 µl.

Kinase activity may vary depending on the substrate and reaction conditions used.

Storage and Guarantee: This product is guaranteed for 6 months from date of receipt.

This product is for research use only and is not for use in diagnostic procedures.



Recombinant WEE1 protein tested by SDS-PAGE gel.

0.5 µg of WEE1 protein was analyzed using SDS/PAGE followed by Western blot with either an anti-WEE1 or anti-GST antibody.