

MEP50 antibody (pAb)

Catalog Nos: 39190, 39191

RRID: AB_2793177

Isotype: Serum

Application(s): WB

Reactivity: Human, Wide Range Predicted

Volumes: 200 μ l, 10 μ l

Purification: None

Host: Rabbit

Molecular Weight: 37 kDa

Background: MEP50 (also designated WDR77) is an important component of the methylosome, a large (20S) protein arginine methyltransferase complex that contains PRMT5. The methylosome functions to modify specific arginines to dimethylarginines in the arginine- and glycine-rich domains of several spliceosomal Sm proteins. This modification targets these proteins to the survival of motor neurons (SMN) complex for assembly into small nuclear ribonucleoprotein (snRNP) core particles. A 50 kDa WD repeat protein MEP50 binds to JBP1 and a subset of Sm proteins and is thought to provide an interface for multiple protein interactions between methylosome proteins. The ability of MEP50 to interact with multiple proteins suggests it is important for targeting the Sm as well as other yet unknown proteins to the methylosome for symmetrical dimethylation. MEP50 specifically interacts with CTD phosphatase FCP1 (CTDP1), a protein that may link the processes of transcriptional elongation and splicing, and with Suz12, a polycomb group protein involved in transcriptional repression.

Immunogen: This MEP50 antibody was raised against full-length human MEP50 with an N-terminal His-Tag.

Buffer: Rabbit serum containing 30% glycerol and 0.035% sodium azide. Sodium azide is highly toxic.

Application Notes:

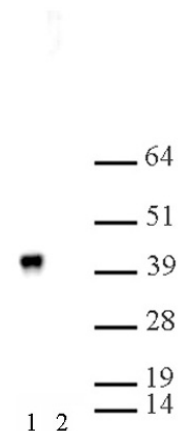
Applications Validated by Active Motif:

WB*: 1:1,000 - 1:2,500 dilution

*Note: many chromatin-bound proteins are not soluble in a low salt nuclear extract and fractionate to the pellet. Therefore, we recommend a High Salt / Sonication Protocol when preparing nuclear extracts for Western blot.

Storage and Guarantee: Some products may be shipped at room temperature. This will not affect their stability or performance. Avoid repeated freeze/thaw cycles by aliquoting items into single-use fractions for storage at -20°C for up to 2 years. Keep all reagents on ice when not in storage. This product is guaranteed for 12 months from date of receipt.

This product is for research use only and is not for use in diagnostic procedures.



MEP50 pAb tested by Western blot.

Whole-cell extract of HeLa cells (20 μ g per lane) was probed with MEP50 pAb at a dilution of 1:2,500 dilution (lane 1). In lane 2, the antibody was pre-incubated with 1 μ M recombinant MEP50 protein, eliminating the band and demonstrating the specificity of MEP50 pAb for MEP50.