

LIG1 antibody (pAb)

Catalog No: 39214**RRID:** AB_2793186**Application(s):** WB**Reactivity:** Human**Volume:** 200 µl**Purification:** Affinity Purified**Host:** Rabbit**Isotype:** IgG**Molecular Weight:** 100 kDa

Background: LIG1 is an ATP-dependent DNA ligase that participates in base excision and repair processes during DNA replication.

Immunogen: This LIG1 antibody was raised against a peptide corresponding to amino acid residues 51-68 of human LIG1.

Buffer: PBS containing 0.02% sodium azide and 0.1 mg/ml BSA. Sodium azide is highly toxic.

Application Notes:

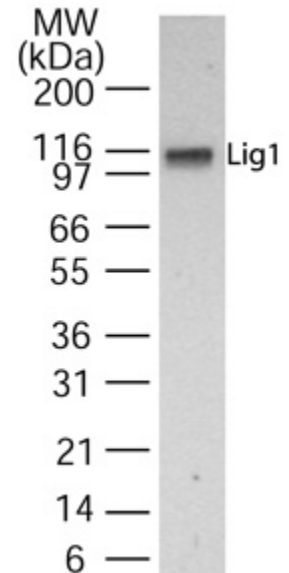
Applications Validated by Active Motif:

WB: 1:500 - 1:1,000 dilution

For optimal results, primary antibody incubations should be performed at room temperature. The addition of 0.1% Tween 20 to all blocking solutions may also reduce background. Individual optimization may be required.

Storage and Guarantee: Some products may be shipped at room temperature. This will not affect their stability or performance. Store at 4°C for short term. Avoid repeated freeze/thaw cycles by aliquoting items into single-use fractions for storage at -20°C for up to 2 years. Keep all reagents on ice when not in storage. This product is guaranteed for 12 months from date of receipt.

This product is for research use only and is not for use in diagnostic procedures.



LIG1 pAb tested by Western blot.
Detection of LIG1 by Western blot. The analysis was performed using HeLa nuclear extract and LIG1 pAb at a 1:1,000 dilution.