

## PMS2 antibody (mAb)

**Catalog No:** 39221**RRID:** AB\_2793191**Clone:** 163C1251**Application(s):** WB**Reactivity:** Human, Mouse**Quantity:** 100 µg**Purification:** Affinity Purified**Host:** Mouse**Isotype:** IgG**Concentration:** 0.5 µg/µl**Molecular Weight:** 85 kDa

**Background:** PMS2 – Post-meiotic Segregation Increased 2 is the human homolog of the yeast Pms2 protein and is involved in post-replicative DNA mismatch repair (MMR). It forms a heterodimer with MLH-1 and this complex interacts with other protein complexes that recognize and bind to mismatched bases. PMS2 has endonuclease activity and introduces single-strand breaks near the mismatch and thus generates new entry points for the exonuclease EXO1 to degrade the strand containing the mismatch. DNA methylation of the existing strand prevents cleavage and dictates that only the unmethylated, newly replicated (and likely to have the incorrect base) strand be repaired. Mutations in this gene are associated with hereditary nonpolyposis colorectal cancer and Turcot syndrome.

**Immunogen:** This PMS2 antibody was raised against a peptide corresponding to amino acid residues 623-639 of human PMS2.

**Buffer:** PBS containing 0.02% sodium azide. Sodium azide is highly toxic.

**Application Notes:**

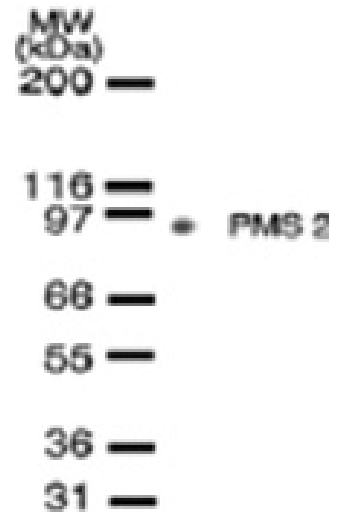
Applications Validated by Active Motif:

WB: 1 - 2 µg/ml dilution

For optimal results, primary antibody incubations should be performed at room temperature. The addition of 0.1% Tween 20 to all blocking solutions may also reduce background. Individual optimization may be required.

**Storage and Guarantee:** Some products may be shipped at room temperature. This will not affect their stability or performance. Store at 4°C for short term. Avoid repeated freeze/thaw cycles by aliquoting items into single-use fractions for storage at -20°C for up to 2 years. Keep all reagents on ice when not in storage. This product is guaranteed for 12 months from date of receipt.

This product is for research use only and is not for use in diagnostic procedures.

**PMS2 mAb tested by Western blot.**

PMS2 detection by Western blot. The analysis was performed using NIH/3T3 whole-cell extract and PMS2 pAb at a 2 µg/ml dilution.