

## UBE2V2 antibody (pAb)

**Catalog No:** 39226

**RRID:** AB\_2793196

**Application(s):** WB

**Reactivity:** Human

**Quantity:** 100 µg

**Purification:** Affinity Purified

**Host:** Rabbit

**Isotype:** IgG

**Concentration:** 0.5 µg/µl

**Molecular Weight:** 15 kDa

**Background:** UBE2V2 – Ubiquitin-Conjugating Enzyme E2 Variant 2 is a member of the Ubiquitin-conjugating E2 family of proteins but lacks the conserved cysteine residue that is critical for the catalytic activity of E2 enzymes and has no intrinsic E2 ligase activity. The protein encoded by this gene also shares homology with ubiquitin-conjugating enzyme E2 variant 1 and the yeast MMS2 gene product. It forms a heterodimer with UBE2N and catalyzes the synthesis of poly-ubiquitin chains that are linked through Lys63, which does not lead to protein degradation by the proteasome. Instead, it mediates transcriptional activation of target genes, plays a role in the control of progress through the cell cycle as well as differentiation. It also plays a role in the error-free DNA repair pathway and contributes to the survival of cells after DNA damage.

**Immunogen:** This UBE2V2 antibody was raised against a peptide corresponding to amino acid residues 12-28 of human UBE2V2.

**Buffer:** PBS containing 0.2% gelatin and 0.05% sodium azide. Sodium azide is highly toxic.

### Application Notes:

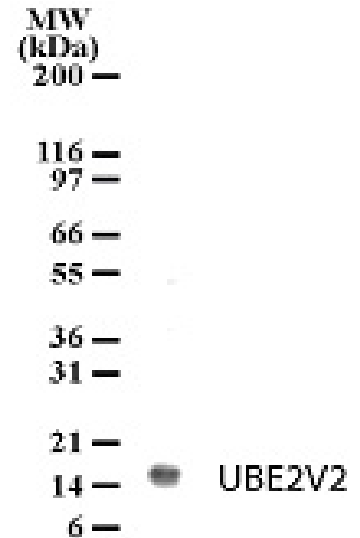
Applications Validated by Active Motif:

WB: 1 - 3 µg/ml dilution

For optimal results, primary antibody incubations should be performed at room temperature. The addition of 0.1% Tween 20 to all blocking solutions may also reduce background. Individual optimization may be required.

**Storage and Guarantee:** Some products may be shipped at room temperature. This will not affect their stability or performance. Store at 4°C for short term. Avoid repeated freeze/thaw cycles by aliquoting items into single-use fractions for storage at -20°C for up to 2 years. Keep all reagents on ice when not in storage. This product is guaranteed for 12 months from date of receipt.

This product is for research use only and is not for use in diagnostic procedures.



### UBE2V2 pAb tested by Western blot.

Detection of UBE2V2 by Western blot. The analysis was performed using HL-60 whole-cell extract and UBE2V2 pAb at a 2 µg/ml dilution.