

Aurora B antibody (pAb)

Catalog Nos: 39261, 39262

RRID: AB_2793209

Isotype: Serum

Application(s): ICC, IF, WB

Reactivity: Human, Mouse, Wide Range Predicted

Volumes: 200 μ l, 10 μ l

Purification: None

Host: Rabbit

Molecular Weight: 49 kDa

Background: Aurora B (Aurora Kinase B, AurB, ARK2) is a Ser/Thr kinase that is part of the chromosomal passenger complex that associates with chromosomes and is an important regulator of mitosis and meiosis. Aurora B becomes concentrated at the centromere during the onset of mitosis, but relocates to the spindle midzone during anaphase. Aurora B phosphorylates a number of substrates, including INCENP, CENP-A, and Histone H3. Misregulation of Aurora B activity can lead to chromosome instability and is implicated in a number of cancers.

Immunogen: This Aurora B antibody was raised against a peptide including the C-terminus of human Aurora B.

Buffer: Rabbit serum containing 30% glycerol and 0.035% sodium azide. Sodium azide is highly toxic.

Application Notes:

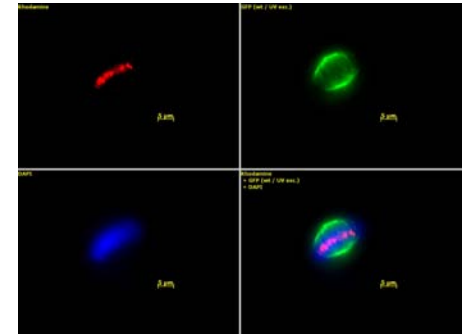
Applications Validated by Active Motif:

ICC/IF: 1:200 - 1:1,000 dilution

WB: 1:500 - 1:5,000 dilution

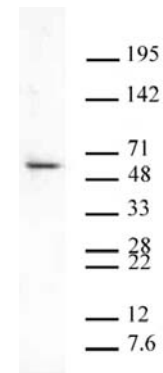
Storage and Guarantee: Some products may be shipped at room temperature. This will not affect their stability or performance. Avoid repeated freeze/thaw cycles by aliquoting items into single-use fractions for storage at -20°C for up to 2 years. Keep all reagents on ice when not in storage. This product is guaranteed for 12 months from date of receipt.

This product is for research use only and is not for use in diagnostic procedures.



Aurora B pAb tested by immunofluorescence.

Top left: HeLa cells stained with Aurora B polyclonal antibody at a 1:200 dilution. Top right: Same cells stained with alpha Tubulin mAb. Bottom left: Same cells stained with DAPI. Bottom right: Merge of all 3 images.



Aurora B pAb tested by Western blot

Nuclear extract of U2OS cells (20 μ g per lane) probed with Aurora B polyclonal antibody (1:500 dilution).