

MTA2 antibody (pAb)

Catalog Nos: 39359, 39360

RRID: AB_2614946

Isotype: Serum

Application(s): WB

Reactivity: Human, Mouse, Wide Range Predicted

Volumes: 200 μ l, 10 μ l

Purification: None

Host: Rabbit

Molecular Weight: 70 kDa

Background: MTA2 (Metastasis-associated protein 2) is a member of the Mi-2/NuRD complex, a nucleosome (chromatin) remodeling deacetylase complex. The MTA family sequences contain several common domains, potentially involved in protein-protein interactions (BAH domain), in DNA binding (SANT domain and GATA-type zinc finger motif) and in signal transduction involving many kinase, adaptor and scaffolding proteins (src-homology (SH)-binding motifs). Tumor suppressor p53 protein is deacetylated by both MTA1 and MTA2, leading to inhibition of growth arrest in transforming cells supporting a link between these protein family members and metastasis. MTA2 is ubiquitously expressed.

Immunogen: This MTA2 antibody was raised against a peptide corresponding to the C-terminus of human MTA2.

Buffer: Rabbit serum containing 30% glycerol and 0.035% sodium azide. Sodium azide is highly toxic.

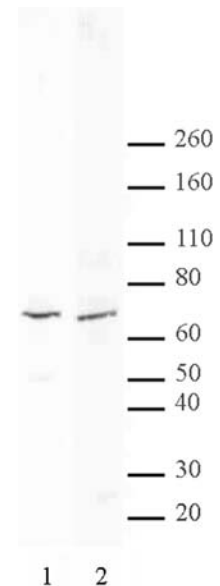
Application Notes:

Applications Validated by Active Motif:

WB: 1:500 - 1:2,000 dilution

Storage and Guarantee: Some products may be shipped at room temperature. This will not affect their stability or performance. Avoid repeated freeze/thaw cycles by aliquoting items into single-use fractions for storage at -20°C for up to 2 years. Keep all reagents on ice when not in storage. This product is guaranteed for 12 months from date of receipt.

This product is for research use only and is not for use in diagnostic procedures.



MTA2 pAb tested by Western blot.

Nuclear extract (25 μ g) of HEK293 (Lane 1) and CSML0 cells (Lane 2) was probed with MTA2 pAb (1:2,000).