

Bcl3 antibody (pAb)

Catalog Nos: 39761, 39762

RRID: AB_2793333

Isotype: Serum

Application(s): WB

Reactivity: Human

Volumes: 100 µl, 10 µl

Purification: None

Host: Rabbit

Molecular Weight: 60 kDa

Background: Bcl3 (B-cell lymphoma 3 protein) functions as a transcriptional co-activator that activates through its association with NFκB homodimers. Bcl3 contains seven ankyrin repeats, which are most closely related to those found in IκB proteins. Bcl3 also functions as a form of IκBNFκB p50 subunit inhibiting its translocation to the nucleus. The expression of this gene can be induced by NFκB, which forms a part of the autoregulatory loop that controls the nuclear residence of NFκB p50. Bcl3 is overexpressed in a number of cancers, can transform fibroblasts and induce tumors in nude mice, thus implicating Bcl3 as a proto-oncogene.

Immunogen: This Bcl3 antibody was raised against a peptide within the C-terminal half of human Bcl3.

Buffer: Rabbit serum containing 30% glycerol and 0.035% sodium azide. Sodium azide is highly toxic.

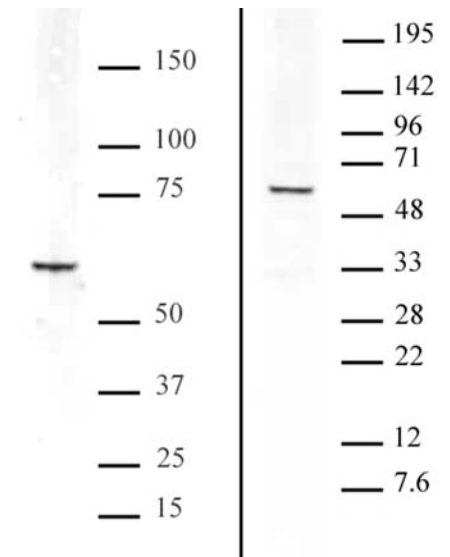
Application Notes:

Applications Validated by Active Motif:

WB: 1:500 - 1:2,000 dilution

Storage and Guarantee: Some products may be shipped at room temperature. This will not affect their stability or performance. Avoid repeated freeze/thaw cycles by aliquoting items into single-use fractions for storage at -20°C for up to 2 years. Keep all reagents on ice when not in storage. This product is guaranteed for 12 months from date of receipt.

This product is for research use only and is not for use in diagnostic procedures.



Bcl3 antibody tested by Western blot.

Detection of Bcl3 by Western blot analysis. Lane 1: HeLa whole-cell extract (20 µg). Lane 2: Nuclear extract (20 µg) of Raji cells. Both probed with Bcl3 antibody at a dilution of 1:1,000.