

Ki-67 antibody (pAb)

Catalog Nos: 39799, 39800

RRID: AB_2793347

Isotype: IgG

Application(s): WB

Reactivity: Human

Volumes: 100 μ l, 10 μ l

Purification: Affinity Purified

Host: Rabbit

Molecular Weight: 360 kDa

Background: Ki-67 encodes a protein that is highly expressed in dividing cells but not in quiescent cells. Ki-67 is a useful marker for rapidly dividing cells and has been used as a marker for cancer cells, including breast, bladder, brain, colon, and prostate cancer.

Immunogen: This Ki-67 antibody was raised against a peptide within the N-terminal region of human Ki-67.

Buffer: Purified IgG in 70 mM Tris (pH 8), 105 mM NaCl, 31 mM glycine, 0.07 mM EDTA, 30% glycerol and 0.035% sodium azide. Sodium azide is highly toxic.

Application Notes:

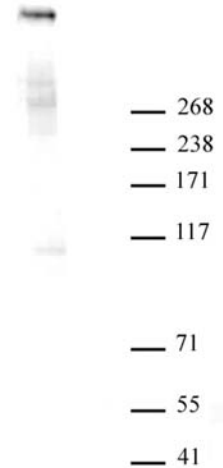
Applications Validated by Active Motif:

WB*: 1:500 1:1,000 dilution

*Note: many chromatin-bound proteins are not soluble in a low salt nuclear extract and fractionate to the pellet. Therefore, we recommend a High Salt / Sonication Protocol when preparing nuclear extracts for Western blot.

Storage and Guarantee: Some products may be shipped at room temperature. This will not affect their stability or performance. Avoid repeated freeze/thaw cycles by aliquoting items into single-use fractions for storage at -20°C for up to 2 years. Keep all reagents on ice when not in storage. This product is guaranteed for 12 months from date of receipt.

This product is for research use only and is not for use in diagnostic procedures.



Ki-67 antibody tested by Western blot.
Detection of Ki-67 by Western blot. Raji nuclear extract (30 μ g) probed with Ki-67 antibody (1:500 dilution). Lane 2: pre-incubation of antibody with immunizing peptide.