

MPP8 antibody (mAb)

Catalog Nos: 39819, 39820

RRID: AB_2793354

Clone: N119/44

Isotype: IgG

Application(s): WB

Reactivity: Human

Quantities: 100 µg, 10 µg

Purification: Protein G Chromatography

Host: Mouse

Concentration: 1 µg/µl

Molecular Weight: 120 kDa

Background: MPP8 (M-Phase Phosphoprotein 8) was originally identified as a phosphoprotein that reacts with MPM2, an antibody that labels mitosis-specific and cell cycle-regulated phosphoproteins. MPP8 contains a single chromodomain that preferentially interacts with nucleosomes enriched for histone H3 lysine 9 methylation but not lysine 4 methylation.

Immunogen: This MPP8 antibody was raised against a recombinant protein corresponding to amino acids 50-120 of human MPP8 (M-phase phosphoprotein 8).

Buffer: Purified IgG in 70 mM Tris (pH 8), 105 mM NaCl, 31 mM glycine, 0.07 mM EDTA, 30% glycerol and 0.035% sodium azide. Sodium azide is highly toxic.

Application Notes:

Applications Validated by Active Motif:

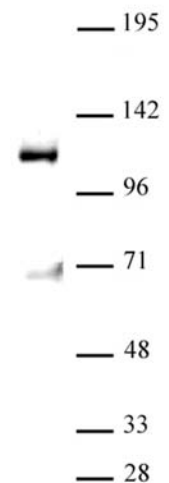
WB*: 0.5 - 2 µg/ml dilution

*Note: many chromatin-bound proteins are not soluble in a low salt nuclear extract and fractionate to the pellet. Therefore, we recommend a High Salt / Sonication Protocol when preparing nuclear extracts for Western blot.

For MPP8, we also offer AbFlex® MPP8 Recombinant Antibody (rAb). For details, see Catalog No. 91277.

Storage and Guarantee: Some products may be shipped at room temperature. This will not affect their stability or performance. Avoid repeated freeze/thaw cycles by aliquoting items into single-use fractions for storage at -20°C for up to 2 years. Keep all reagents on ice when not in storage. This product is guaranteed for 12 months from date of receipt.

This product is for research use only and is not for use in diagnostic procedures.



MPP8 antibody (mAb) tested by Western blot.

Nuclear extract of HEK293 cells (20 µg per lane) probed with MPP8 antibody (mAb) (2 µg/ml dilution).