

## NAP1L1 antibody (pAb)

**Catalog Nos:** 39841, 39842

**RRID:** AB\_2793364

**Isotype:** IgG

**Application(s):** WB

**Reactivity:** Human

**Volumes:** 100 µl, 10 µl

**Purification:** Affinity Purified

**Host:** Rabbit

**Molecular Weight:** 49 & 52 kDa

**Background:** NAP1L1 (Nucleosome assembly protein 1-like 1; NAP1-Related Protein, NRP) is a member of the NAP family of histone chaperones. Histone chaperones are involved in chromatin assembly following DNA replication.

**Immunogen:** This NAP1L1 antibody was raised against a peptide within the N-terminal region of NAP1L1.

**Buffer:** Purified IgG in 70 mM Tris (pH 8), 105 mM NaCl, 31 mM glycine, 0.07 mM EDTA, 30% glycerol and 0.035% sodium azide. Sodium azide is highly toxic.

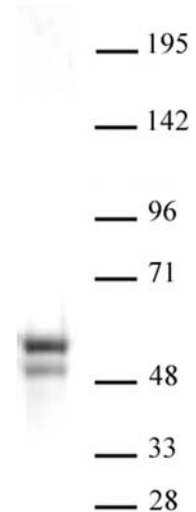
**Application Notes:**

Applications Validated by Active Motif:

WB: 1:500 - 1:2,000 dilution

**Storage and Guarantee:** Some products may be shipped at room temperature. This will not affect their stability or performance. Avoid repeated freeze/thaw cycles by aliquoting items into single-use fractions for storage at -20°C for up to 2 years. Keep all reagents on ice when not in storage. This product is guaranteed for 12 months from date of receipt.

This product is for research use only and is not for use in diagnostic procedures.



**NAP1L1 antibody (pAb) tested by Western blot.**

Whole cell extract of HeLa cells (30 µg per lane) probed with NAP1L1 antibody (pAb) (1:2,000 dilution).