

## Nucleophosmin antibody (pAb)

**Catalog Nos:** 39849, 39850

**RRID:** AB\_2793367

**Isotype:** Serum

**Application(s):** WB

**Reactivity:** Human

**Volumes:** 100 µl, 10 µl

**Purification:** None

**Host:** Rabbit

**Molecular Weight:** 38 kDa

**Background:** Nucleophosmin (NPM, NPM1, Nucleolar phosphoprotein B23) is a highly phosphorylated nucleolar protein involved in ribosome biogenesis, maintenance of genome stability, is directly implicated in cancer pathogenesis and serves as a histone chaperone. Nucleophosmin is closely related to Nucleoplasmin and shuttles back and forth between the nucleolus and the nucleoplasm. Chromosomal aberrations involving Nucleophosmin were found in patients with non-Hodgkin lymphoma, acute promyelocytic leukemia, myelodysplastic syndrome, and acute myelogenous leukemia. Nucleophosmin has been shown to interact with Nucleolin, AKT1, BRCA1 and BARD1. Mice deficient for Nucleophosmin have severe defects in genome stability due to unrestricted centrosome duplication. Heterozygous Nucleophosmin mutant mice show signs of myelodysplastic syndrome.

**Immunogen:** This Nucleophosmin antibody was raised against a peptide within the C-terminal region of human nucleophosmin.

**Buffer:** Rabbit serum containing 30% glycerol and 0.035% sodium azide. Sodium azide is highly toxic.

### Application Notes:

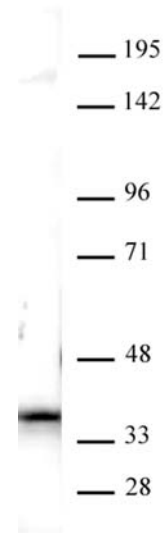
Applications Validated by Active Motif:

WB\*: 1:500 - 1:2,000 dilution

\*Note: many chromatin-bound proteins are not soluble in a low salt nuclear extract and fractionate to the pellet. Therefore, we recommend a High Salt / Sonication Protocol when preparing nuclear extracts for Western blot.

**Storage and Guarantee:** Some products may be shipped at room temperature. This will not affect their stability or performance. Avoid repeated freeze/thaw cycles by aliquoting items into single-use fractions for storage at -20°C for up to 2 years. Keep all reagents on ice when not in storage. This product is guaranteed for 12 months from date of receipt.

This product is for research use only and is not for use in diagnostic procedures.



### Nucleophosmin antibody (pAb) tested by Western blot.

Nuclear extract of Jurkat cells (30 µg per lane) probed with Nucleophosmin antibody (pAb) at a dilution of 1:1,000.