

## MBD1 antibody (pAb)

**Catalog Nos:** 39857, 39858

**RRID:** AB\_2793371

**Isotype:** IgG

**Application(s):** WB

**Reactivity:** Human

**Volumes:** 100 µl, 10 µl

**Purification:** Affinity Purified

**Host:** Rabbit

**Molecular Weight:** 80 kDa

**Background:** MBD1 (methyl-CpG binding domain protein 1) is thought to function as a mediator of the biological consequences of DNA methylation. Methylation of mammalian DNA has long been recognized to play a major role in a number of cellular functions such as development and control of gene expression. It is generally associated with the repressive chromatin state. The complex series of events leading to this repressive state involve the coordinated regulation of DNA methyltransferases and two other groups of proteins called the Methyl-CpG binding proteins (MBD proteins) and the Kaiso family of proteins. The MBD family of proteins include MeCP2, MBD1, MBD2, MBD3 and MBD4. MBD1 is recruited to both methylated and non-methylated CpGs via separate domains: the CXXC domain targets the protein to non-methylated CpGs whereas the MBD domain targets the protein to methylated CpG. During S phase of the cell cycle, MBD1 can interact with SETDB1 (H3K9 methyltransferase).

**Immunogen:** This MBD1 antibody was raised against a peptide within the C-terminal region of human MBD1.

**Buffer:** Purified IgG in 70 mM Tris (pH 8), 105 mM NaCl, 31 mM glycine, 0.07 mM EDTA, 30% glycerol and 0.035% sodium azide. Sodium azide is highly toxic.

### Application Notes:

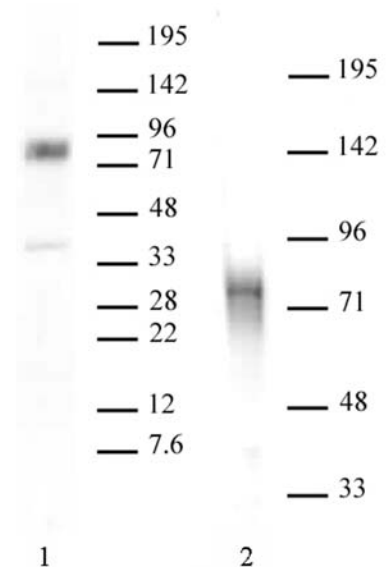
Applications Validated by Active Motif:

WB\*: 1:500 - 1:2,000 dilution

\*Note: many chromatin-bound proteins are not soluble in a low salt nuclear extract and fractionate to the pellet. Therefore, we recommend a High Salt / Sonication Protocol when preparing nuclear extracts for Western blot.

**Storage and Guarantee:** Some products may be shipped at room temperature. This will not affect their stability or performance. Avoid repeated freeze/thaw cycles by aliquoting items into single-use fractions for storage at -20°C for up to 2 years. Keep all reagents on ice when not in storage. This product is guaranteed for 12 months from date of receipt.

This product is for research use only and is not for use in diagnostic procedures.



### MBD1 antibody tested by Western blot.

Western blot using MBD1 antibody (pAb) at 1:500 dilution. Lane 1: Nuclear extract (25 µg) of HeLa cells. Lane 2: Nuclear extract (30 µg) of Jurkat cells.