

MMSET / WHSC1 antibody (mAb)

Catalog Nos: 39879, 39880

RRID: AB_2614931

Clone: 29D1

Isotype: IgG2b

Application(s): ICC, IF, WB

Reactivity: Human

Quantities: 100 µg, 10 µg

Purification: Protein G Chromatography

Host: Mouse

Concentration: 1 µg/µl

Molecular Weight: 88 & 157 kDa

Background: MMSET (Multiple Myeloma SET domain-containing protein) / WHSC1 (Wolf-Hirschhorn Syndrome Candidate 1; also known as NSD2, Nuclear Receptor binding SET domain protein 2; TRX5, Trithorax 5) is a SET domain-containing histone methyltransferase specific for lysine 36 of histone H3. The MMSET / WHSC1 gene is deleted in Wolf-Hirschhorn syndrome, a disorder characterized by developmental defects and mental retardation. In 15% of patients with Multiple Myeloma (MM), a chromosomal translocation leads to MMSET / WHSC1 gene being aberrantly placed under the control of the IgH intronic µ enhancer and expressed at very high levels. This event is apparently a key component in cellular transformation leading to MM. Reduction in MMSET / WHSC1 expression in a myeloma cell line suppressed its growth, suggesting a role for MMSET in maintaining the transformed state.

Immunogen: This MMSET / WHSC1 antibody was raised against a recombinant protein corresponding to amino acids 1-647 of human MMSET-I.

Buffer: Purified IgG in 70 mM Tris (pH 8), 105 mM NaCl, 31 mM glycine, 0.07 mM EDTA, 30% glycerol and 0.035% sodium azide. Sodium azide is highly toxic.

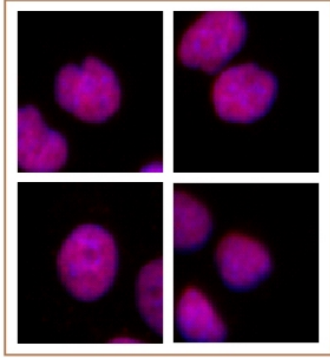
Application Notes:

Applications Validated by Active Motif:

ICC/IF: 0.5 µg/ml dilution

Storage and Guarantee: Some products may be shipped at room temperature. This will not affect their stability or performance. Avoid repeated freeze/thaw cycles by aliquoting items into single-use fractions for storage at -20°C for up to 2 years. Keep all reagents on ice when not in storage. This product is guaranteed for 12 months from date of receipt.

This product is for research use only and is not for use in diagnostic procedures.



MMSET / WHSC1 antibody (mAb) tested by immunofluorescence.

Formaldehyde fixed HeLa cells stained with MMSET / WHSC1 antibody at a 0.5 µg/ml dilution.