

Histone H3K36me2 antibody (pAb)

Catalog Nos: 39891, 39892

RRID: AB_2793383

Isotype: IgG

Application(s): DB, WB

Reactivity: Budding Yeast, Human, Wide Range Predicted

Quantities: 100 µg, 10 µg

Purification: Protein A Chromatography

Host: Rabbit

Concentration: 1 µg/µl

Molecular Weight: 17 kDa

Background: Histone H3 is one of the core components of the nucleosome. The nucleosome is the smallest subunit of chromatin and consists of 147 base pairs of DNA wrapped around an octamer of core histone proteins (two each of Histone H2A, Histone H2B, Histone H3 and Histone H4). Chromatin is subject to a variety of chemical modifications, including post-translational modifications of the histone proteins and the methylation of cytosine residues in the DNA. Reported histone modifications include acetylation, methylation, phosphorylation, ubiquitylation, glycosylation, ADP-ribosylation, carbonylation and SUMOylation; these modifications play a major role in regulating gene expression.

The methylation of histones can occur on two different residues: arginine or lysine. Histone methylation can be associated with transcriptional activation or repression, depending on the methylated residue. Histone H3 is methylated at lysine 36 by the Set2 (yeast) and NSD1 (mammals) methyltransferases. Dimethylation of lysine 36 of histone H3 is involved with transcriptional elongation by RNA pol II holoenzyme and is a marker of transcribed genes.

Immunogen: This Histone H3 dimethyl Lys36 antibody was raised against a peptide including dimethyl-lysine 36 of histone H3.

Buffer: Purified IgG in PBS (pH 7.5) with 30% glycerol and 0.035% sodium azide. Sodium azide is highly toxic. For your convenience, an unpurified serum version (Catalog No. 39255) of this antibody is also available.

Application Notes:

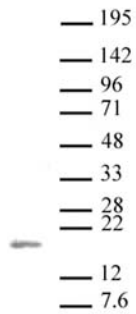
Applications Validated by Active Motif:

WB*: 1 - 2 µg/ml dilution

*Note: many chromatin-bound proteins are not soluble in a low salt nuclear extract and fractionate to the pellet. Therefore, we recommend a High Salt / Sonication Protocol when preparing nuclear extracts for Western blot.

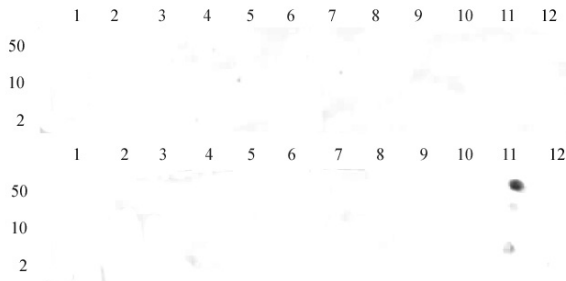
Storage and Guarantee: Some products may be shipped at room temperature. This will not affect their stability or performance. Avoid repeated freeze/thaw cycles by aliquoting items into single-use fractions for storage at -20°C for up to 2 years. Keep all reagents on ice when not in storage. This product is guaranteed for 12 months from date of receipt.

This product is for research use only and is not for use in diagnostic procedures.



Histone H3 dimethyl Lys36 antibody tested by Western blot.

Nuclear extract of HeLa cells (20 µg) probed with Histone H3 dimethyl Lys36 antibody at a dilution of 1 µg/ml.



Histone H3 dimethyl Lys36 antibody (pAb) tested by dot blot analysis.

Dot blot analysis was used to confirm the specificity of Histone H3 dimethyl Lys36 antibody for dimethyl Lys36 histone H3. Methylated peptides corresponding to the immunogen and related sequences derived from histone H3 were spotted onto PVDF and probed with Histone H3 dimethyl Lys36 antibody at 1 µg/ml. The amount of peptide (picomoles) spotted is indicated next to each row. Top panel: Lane 1: unmodified Lys4. Lane 2: monomethyl Lys4. Lane 3: dimethyl Lys4. Lane 4: trimethyl Lys4. Lane 5: unmodified Lys9, 14, 18. Lane 6: monomethyl Lys9. Lane 7: dimethyl Lys9. Lane 8: trimethyl Lys9. Lane 9: dimethyl Lys14. Lane 10: monomethyl Lys18. Lane 11: dimethyl Lys18. Lane 12: trimethyl Lys18. Bottom panel: Lane 1: Unmodified Lys23. Lane 2: Monomethyl Lys23. Lane 3: Dimethyl Lys23. Lane 4: Trimethyl Lys23. Lane 5: unmodified Lys27. Lane 6: monomethyl Lys27. Lane 7: dimethyl Lys27. Lane 8: trimethyl Lys27. Lane 9: unmodified Lys36. Lane 10: monomethyl Lys36. Lane 11: dimethyl Lys36. Lane 12: