

EZH2 antibody (pAb)

Catalog Nos: 39933, 39035, 39934

RRID: AB_2793397

Isotype: IgG

Application(s): ChIP, IF, IP, WB

Reactivity: Human, Mouse

Volumes: 100 μ l, 50 μ l, 10 μ l

Purification: Affinity Purified

Host: Rabbit

Molecular Weight: 96 kDa

Background: EZH2 – (Enhancer of Zeste homolog 2) is a human homolog of the Drosophila Polycomb-group protein Enhancer of Zeste protein. It contains a SET domain that catalyzes the methylation of histone H3 at lysine 27 (Histone H3 Lys27 monomethylated, dimethylated and trimethylated). Polycomb-group proteins repress gene expression by binding to chromatin and locally altering chromatin structure. EZH2, BMI-1 and Suz12 are present in the PRC2 and PRC3 protein complexes that function as mediators of epigenetic transcriptional silencing. EZH2 associates with the embryonic ectoderm development protein, the VAV1 oncoprotein, and the X-linked nuclear protein. EZH2 may play a role in the hematopoietic and central nervous systems. Deregulation of EZH2 is linked to a variety of cancers.

Immunogen: This EZH2 antibody was raised against a recombinant fusion protein corresponding to amino acids 1-370 of mouse EZH2.

Buffer: 70 mM Tris (pH 8), 105 mM NaCl, 31 mM glycine, 0.07 mM EDTA, 0.5 mg/ml BSA, 30% glycerol and 0.035% sodium azide. Sodium azide is highly toxic.

Application Notes:

Applications Validated by Active Motif:

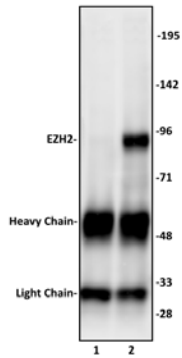
IP: 10 μ l per IP

WB*: 1:500 - 1:2,000 dilution

*Note: Many chromatin-bound proteins are not soluble in a low salt nuclear extract and fractionate to the pellet. Therefore, we recommend a High Salt / Sonication Protocol when preparing nuclear extracts for Western blot.

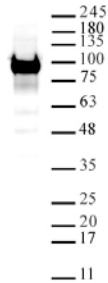
Storage and Guarantee: Some products may be shipped at room temperature. This will not affect their stability or performance. Avoid repeated freeze/thaw cycles by aliquoting items into single-use fractions for storage at -20°C for up to 2 years. Keep all reagents on ice when not in storage. This product is guaranteed for 12 months from date of receipt.

This product is for research use only and is not for use in diagnostic procedures.



EZH2 antibody (pAb) tested by Immunoprecipitation.

10 µl of EZH2 antibody was used to immunoprecipitate EZH2 from 250 µg of HeLa nuclear cell extract (lane 2). 10 µl of rabbit IgG was used as a negative control (lane 1). The immunoprecipitated protein was detected by Western blotting using the EZH2 antibody at a dilution of 1:500.



EZH2 antibody tested by Western blot.

Detection of EZH2 by Western blot. The analysis was performed using 20 µg of HeLa cell nuclear extract and EZH2 antibody at a 1:1000 dilution.