

TRAF2 antibody (mAb)

Catalog No: 40919

RRID: AB_2793438

Clone: 33A1293

Application(s): WB

Reactivity: Human

Quantity: 100 µg

Purification: Affinity Purified

Host: Mouse

Isotype: IgG1

Concentration: 0.5 µg/µl

Molecular Weight: 57 kDa

Background: TRAF2 (TNF receptor-associated factor 2, TRAP) directly interacts with TNF receptors, and forms a heterodimeric complex with TRAF1. This protein is required for TNF-alpha-mediated activation of MAPK8/JNK and NFκB (NFκB p50 & NFκB p65). The protein complex formed by TRAF2 and TRAF1 interact with the inhibitor-of-apoptosis proteins (Livin/ML-IAP for example), and function as a mediator of the anti-apoptotic signals from TNF receptors. TRAF2 interaction with TRADD, a TNF receptor associated apoptotic signal transducer, ensures the recruitment of IAPs for the direct inhibition of caspase activation (Caspase-3, Caspase-7, Caspase-8, Caspase-9 and Caspase-14). BIRC2/c-IAP1, an apoptosis inhibitor possessing ubiquitin ligase activity, can ubiquitinate and induce the degradation of this protein, and thus potentiate TNF-induced apoptosis.

Immunogen: This TRAF2 antibody was raised against a fusion protein corresponding to amino acid residues 215 to 222 of human TRAF2.

Buffer: PBS containing 0.02% sodium azide. Sodium azide is highly toxic.

Application Notes:

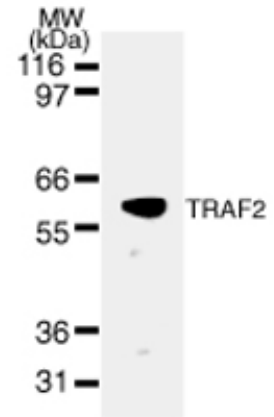
Applications Validated by Active Motif:

WB: 1 - 2 µg/ml dilution

For optimal results, primary antibody incubations should be performed at room temperature. The addition of 0.1% Tween 20 to all blocking solutions may also reduce background. Individual optimization may be required.

Storage and Guarantee: Some products may be shipped at room temperature. This will not affect their stability or performance. Store at 4°C for short term. Avoid repeated freeze/thaw cycles by aliquoting items into single-use fractions for storage at -20°C for up to 2 years. Keep all reagents on ice when not in storage. This product is guaranteed for 12 months from date of receipt.

This product is for research use only and is not for use in diagnostic procedures.



TRAF2 mAb tested by Western blot.

TRAF2 detection by Western blot. The analysis was performed using 30 µg HeLa nuclear extract and TRAF2 mAb at a 2 µg/ml dilution.