

TLR3 antibody (mAb)

Catalog No: 40952

RRID: AB_2793454

Clone: 40C1285

Application(s): WB

Reactivity: Human

Quantity: 100 µg

Purification: Affinity Purified

Host: Mouse

Isotype: IgG1

Concentration: 0.5 µg/µl

Molecular Weight: 120 kDa

Background: TLR3 – Toll-Like receptor 3 is a member of the Toll-like receptor (TLR) family that plays a fundamental role in pathogen recognition and activation of innate immunity. TLRs are highly conserved from *Drosophila* to humans and share structural and functional similarities. They recognize specific molecular features associated with pathogens, and mediate the production of cytokines necessary for the development of effective immunity. Many of the TLRs heterodimerize with each other to modulate receptor function. TLR3 expression is increased after exposure to Gram-negative bacteria and to an even greater extent in response to Gram-positive bacteria. TLR3 forms a homodimer and recognizes viral double stranded RNA (dsRNA).

Immunogen: This TLR3 antibody was raised against a KLH-conjugated synthetic peptide corresponding to human TLR3.

Buffer: PBS containing 0.02% sodium azide. Sodium azide is highly toxic.

Application Notes:

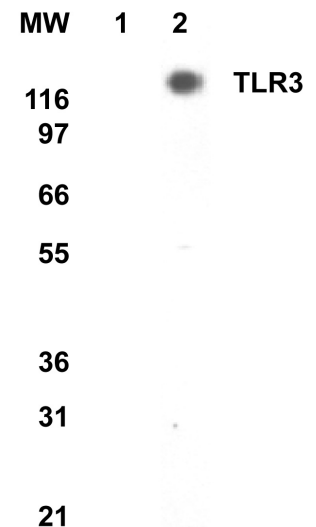
Applications Validated by Active Motif:

WB: 1 - 2 µg/ml dilution

For optimal results, primary antibody incubations should be performed at room temperature. The addition of 0.1% Tween 20 to all blocking solutions may also reduce background. Individual optimization may be required.

Storage and Guarantee: Some products may be shipped at room temperature. This will not affect their stability or performance. Store at 4°C for short term. Avoid repeated freeze/thaw cycles by aliquoting items into single-use fractions for storage at -20°C for up to 2 years. Keep all reagents on ice when not in storage. This product is guaranteed for 12 months from date of receipt.

This product is for research use only and is not for use in diagnostic procedures.



TLR3 mAb tested by Western blot.

TLR3 detection by Western blot. The analysis of TLR3 was performed using TLR3 mAb and nuclear extract from 293 cells (lane 1) and nuclear extract from 293 cells that had been transfected with human TLR3 cDNA (lane 2).