

IKKi/IKKε antibody (pAb)

Catalog No: 40957**RRID:** AB_2793457**Application(s):** WB**Reactivity:** Human**Quantity:** 100 µg**Purification:** Affinity Purified**Host:** Rabbit**Isotype:** IgG**Concentration:** 0.5 µg/µl**Molecular Weight:** 80 kDa

Background: IKKi/IKKε – IκB Kinase-epsilon (also called IKKi) is a homolog of the IKK (IκB kinase) catalytic subunits IKKα and IKKβ. IKKε is primarily expressed in immune cells and may be responsible for modulation of NFκB (NFκB p50 & NFκB p65) activity in the immune system.

Immunogen: This IKKi/IKKε antibody was raised against a synthetic peptide corresponding to amino acid residues 175-188, 525-540, and 567-580 of human IKKi/IKKε.

Buffer: PBS containing 0.02% sodium azide. Sodium azide is highly toxic.

Application Notes:

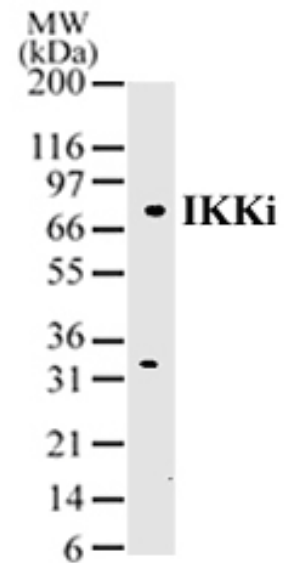
Applications Validated by Active Motif:

WB: 1 - 2 µg/ml dilution

For optimal results, primary antibody incubations should be performed at room temperature. The addition of 0.1% Tween 20 to all blocking solutions may also reduce background. Individual optimization may be required.

Storage and Guarantee: Some products may be shipped at room temperature. This will not affect their stability or performance. Store at 4°C for short term. Avoid repeated freeze/thaw cycles by aliquoting items into single-use fractions for storage at -20°C for up to 2 years. Keep all reagents on ice when not in storage. This product is guaranteed for 12 months from date of receipt.

This product is for research use only and is not for use in diagnostic procedures.



IKKi/IKKε pAb tested by Western blot. IKKi/IKKε detection by Western blot. The analysis was performed using 10 µg of whole-cell extract from Daudi cells and IKKi/IKKε pAb at a 2 µg/ml dilution.