

ATF-6 antibody (mAb)

Catalog No: 40962

RRID: AB_2615056

Clone: 70B1413

Isotype: IgG1, k

Application(s): ChIP, EMSA, FC, IHC, WB

Reactivity: Hamster, Human, Mouse, Rat

Quantity: 100 µg

Purification: Protein G Chromatography

Host: Mouse

Concentration: 1 µg/µl

Molecular Weight: 90 kDa

Background: ATF-6 (activating transcription factor 6) is a transmembrane transcription factor that acts during endoplasmic reticulum (ER) stress to activate transcription.

Immunogen: This ATF-6 antibody was raised against a partial protein containing amino acid residues 1-273 of human ATF-6.

Buffer: PBS containing 0.05% sodium azide. Sodium azide is highly toxic.

Application Notes:

Validated Applications:

FC: 1 µg /1x10⁶ cells

IHC: 1:10 - 1:500 dilution

WB*: 1 - 5 µg/ml dilution

Published Applications:

ChIP

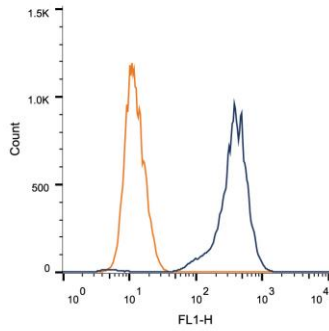
WB

EMSA

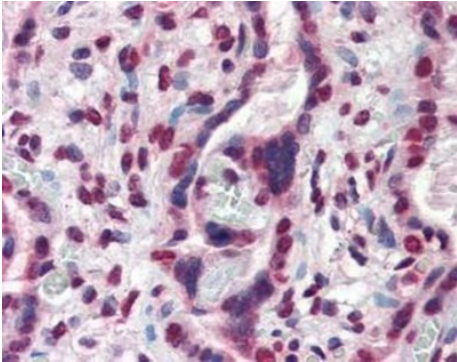
*For optimal results, primary antibody incubations should be performed at room temperature. The addition of 0.1% Tween 20 to all Blotto solutions may also reduce background. Individual optimization may be required. In Western blots the binding pattern of ATF-6 may vary as the antibody may recognize both full-length and cleaved forms of ATF-6. Researchers should consult literature for reported band sizes in their sample or treatment conditions.

Storage and Guarantee: Some products may be shipped at room temperature. This will not affect their stability or performance. Avoid repeated freeze/thaw cycles by aliquoting items into single-use fractions for storage at -20°C for up to 2 years. Keep all reagents on ice when not in storage. This product is guaranteed for 12 months from date of receipt.

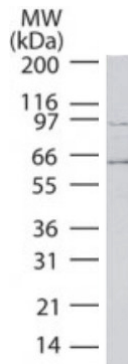
This product is for research use only and is not for use in diagnostic procedures.



ATF-6 antibody (mAb) tested by Flow Cytometry. Intracellular flow cytometric staining of 1×10^6 MCF-7 cells using ATF6 antibody (dark blue) at a dilution of $1 \mu\text{g}/1 \times 10^6$ cells. Isotype control shown in orange.



ATF-6 antibody (mAb) tested by Immunohistochemistry. ATF6 antibody was used in IHC to stain formalin-fixed, paraffin-embedded human placenta at a $10 \mu\text{g}/\text{ml}$ dilution.



ATF-6 antibody (mAb) tested by Western blot.

ATF-6 antibody detection by Western blot. The analysis was performed using $20 \mu\text{g}$ of whole mouse liver lysate and ATF-6 antibody at a $3 \mu\text{g}/\text{ml}$ dilution. A protein of approximately 90 kDa is detected. The lower band may represent cleaved ATF-6.