

PRMT6 antibody (pAb)

Catalog Nos: 61003, 61004

RRID: AB_2615009

Isotype: IgG

Application(s): IHC, WB

Reactivity: Human

Volumes: 100 µl, 10 µl

Purification: Affinity Purified

Host: Rabbit

Molecular Weight: 42 kDa

Background: PRMT6 (Protein Arginine Methyltransferase 6, HRMT1L6, ANM6) is a type I arginine methyltransferase. Arginine methylation is a common post-translational modification of histones and other cellular proteins. PRMT6 preferentially methylates arginine residues present in GAR (glycine and arginine-rich) domains. PRMT6 asymmetrically dimethylates histone H3 at Arg2, which is mutually exclusive to methylation at lysine 4 (associated with transcriptional activation), and thus PRMT6 serves as a transcriptional repressor in this context. It can also symmetrically dimethylate H2A and H4 at Arg3 and serves as a coactivator of transcription in concert with nuclear receptors.

Immunogen: This PRMT6 antibody was raised against a peptide corresponding to amino acids within the N-terminal region of PRMT6.

Buffer: Purified IgG in 70 mM Tris (pH 8), 105 mM NaCl, 31 mM glycine, 0.07 mM EDTA, 30% glycerol and 0.035% sodium azide. Sodium azide is highly toxic.

Application Notes:

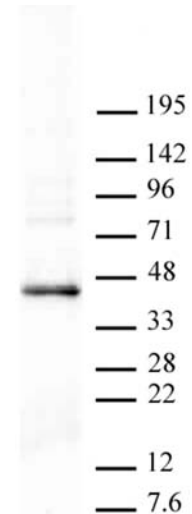
Applications Validated by Active Motif:

WB*: 1:500 - 1:1,000 dilution

*Note: many chromatin-bound proteins are not soluble in a low salt nuclear extract and fractionate to the pellet. Therefore, we recommend a High Salt / Sonication Protocol when preparing nuclear extracts for Western Blot.

Storage and Guarantee: Some products may be shipped at room temperature. This will not affect their stability or performance. Avoid repeated freeze/thaw cycles by aliquoting items into single-use fractions for storage at -20°C for up to 2 years. Keep all reagents on ice when not in storage. This product is guaranteed for 12 months from date of receipt.

This product is for research use only and is not for use in diagnostic procedures.



Western blot of PRMT6 antibody.

Nuclear extract of HeLa cells (20 µg) probed with PRMT6 antibody (1:500).