

BLM antibody (pAb)

Catalog Nos: 61055, 61056**RRID:** AB_2793490**Isotype:** IgG**Application(s):** WB**Reactivity:** Human**Volumes:** 100 µl, 10 µl**Purification:** Affinity Purified**Host:** Rabbit**Molecular Weight:** 165 kDa

Background: BLM (Bloom Syndrome protein, RECQ2, RECQL3) is a DNA helicase similar to *E. coli* RecQ protein that is mutated in patients with Bloom Syndrome, an autosomal recessive disorder characterized by growth deficiency, sun sensitive skin, cancer predisposition and chromosomal instability. The five human RecQ helicases play critical roles in DNA recombination, replication and repair. BLM helps to resolve aberrant chromosome structures generated during DNA replication. It exists in a complex with topoisomerase III α , RMI1/BLAP75 and RMI2 and it is thought that BLM complexes are recruited to resolve Holliday junction intermediates. BLM is heavily phosphorylated, especially during mitosis. BLM has a role during meiosis as well, as BLM males are sterile and BLM females have reduced fertility.

Immunogen: This BLM antibody was raised against a peptide within the N-terminal region of human BLM.

Buffer: Purified IgG in 70 mM Tris (pH 8), 105 mM NaCl, 31 mM glycine, 0.07 mM EDTA, 30% glycerol and 0.035% sodium azide. Sodium azide is highly toxic.

Application Notes:

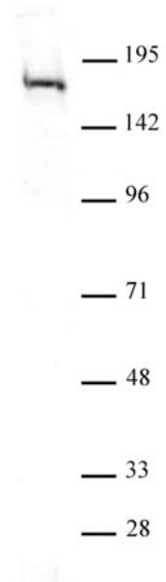
Applications Validated by Active Motif:

WB*: 1:500 - 1:1,000 dilution

*Note: many chromatin-bound proteins are not soluble in a low salt nuclear extract and fractionate to the pellet. Therefore, we recommend a High Salt / Sonication Protocol when preparing nuclear extracts for Western blot.

Storage and Guarantee: Some products may be shipped at room temperature. This will not affect their stability or performance. Avoid repeated freeze/thaw cycles by aliquoting items into single-use fractions for storage at -20°C for up to 2 years. Keep all reagents on ice when not in storage. This product is guaranteed for 12 months from date of receipt.

This product is for research use only and is not for use in diagnostic procedures.

**Western blot of BLM antibody.**

Nuclear extract of HeLa cells (30 µg per lane) probed with BLM antibody (pAb) at a dilution of 1:500.