

SIP1 antibody (mAb)

Catalog Nos: 61095, 61096

RRID: AB_2614989

Clone: 6E5

Isotype: IgG2a

Application(s): ICC, IF, IHC, WB

Reactivity: Human

Quantities: 100 µg, 10 µg

Purification: Protein G Chromatography

Host: Mouse

Concentration: 1 µg/µl

Molecular Weight: 180 kDa

Background: SIP1 (Smad-interacting protein 1, aka ZEB2, Zinc finger E-box-binding homeobox 2) is a sequence-specific DNA binding protein and transcriptional repressor that is involved in normal embryonic development of neural structures and the neural crest. SIP1 belongs to the delta-EF1/Zfh1 family of 2-handed zinc finger/homeodomain proteins and contains a SMAD-binding domain, a homeodomain and two clusters of zinc fingers on the N- and C-termini. SIP1 interacts directly with activated forms of SMAD1, SMAD2 and SMAD3, as well as CBX4 and CTBP1. Mutations in the SIP1 gene cause a form of Hirschsprung disease (HSCR).

Immunogen: This SIP1 antibody was raised against a recombinant protein corresponding to amino acids 1-360 of human SIP1.

Buffer: Purified IgG in 70 mM Tris (pH 8), 105 mM NaCl, 31 mM glycine, 0.07 mM EDTA, 30% glycerol and 0.035% sodium azide. Sodium azide is highly toxic.

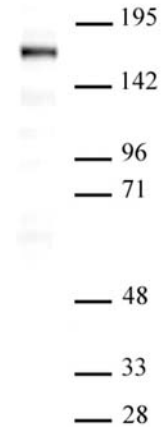
Application Notes:

Applications Validated by Active Motif:

WB: 1 - 4 µg/ml dilution

Storage and Guarantee: Some products may be shipped at room temperature. This will not affect their stability or performance. Avoid repeated freeze/thaw cycles by aliquoting items into single-use fractions for storage at -20°C for up to 2 years. Keep all reagents on ice when not in storage. This product is guaranteed for 12 months from date of receipt.

This product is for research use only and is not for use in diagnostic procedures.



SIP1 antibody (mAb) tested by Western blot.

Detection of SIP1 by Western blot. The analysis was performed using 20 µg of Saos-2 nuclear cell extract and SIP1 (mAb) at a 1 µg/ml dilution.