

## CENP-B antibody (pAb)

**Catalog Nos:** 61287, 61288

**RRID:** AB\_2793582

**Isotype:** IgG

**Application(s):** ICC, IF, IP, WB

**Reactivity:** Human

**Volumes:** 100  $\mu$ l, 10  $\mu$ l

**Purification:** Affinity Purified

**Host:** Rabbit

**Molecular Weight:** 80 kDa

**Background:** CENP-B (Centromere protein B) is a protein associated with centromeric DNA and crucial to the formation of the special chromatin structure on the  $\alpha$ -satellite DNA repeats of the human centromere. CENP-B specifically binds a 17 bp sequence which may function as a cis-element for centromere-specific nucleosome assembly. CENP-B plays a role in the organization of centromere satellite DNA into a higher order structure, directing centromere formation and kinetochore assembly in mammalian chromosomes.

**Immunogen:** This CENP-B antibody was raised against a recombinant protein corresponding to the C-terminal region of human CENP-B.

**Buffer:** Purified IgG in PBS with 30% glycerol and 0.035% sodium azide. Sodium azide is highly toxic.

### Application Notes:

Applications Validated by Active Motif:

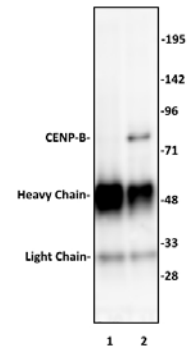
IP: 10  $\mu$ l per IP

WB\*: 1:500 - 1:2,000 dilution

\*Note: many chromatin-bound proteins are not soluble in a low salt nuclear extract and fractionate to the pellet. Therefore, we recommend a High Salt / Sonication Protocol when preparing nuclear extracts for Western Blot.

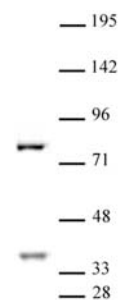
**Storage and Guarantee:** Some products may be shipped at room temperature. This will not affect their stability or performance. Avoid repeated freeze/thaw cycles by aliquoting items into single-use fractions for storage at  $-20^{\circ}\text{C}$  for up to 2 years. Keep all reagents on ice when not in storage. This product is guaranteed for 12 months from date of receipt.

This product is for research use only and is not for use in diagnostic procedures.



### CENP-B antibody (pAb) tested by Immunoprecipitation.

10  $\mu$ l of CENP-B antibody was used to immunoprecipitate CENP-B from 250  $\mu$ g of HeLa nuclear cell extract (lane 2). 10  $\mu$ l of rabbit IgG was used as a negative control (lane 1). The immunoprecipitated protein was detected by Western blotting using the CENP-B antibody at a dilution of 1:500.



### CENP-B antibody (pAb) tested by Western blot.

CENP-B detection by Western blot. The analysis was performed using 30  $\mu$ g HeLa nuclear cell extract and CENP-B at a 1:500 dilution.