

SMARCC1 / BAF155 antibody (pAb)

Catalog Nos: 61409, 61410

RRID: AB_2793624

Isotype: IgG

Application(s): ICC, IF, WB

Reactivity: Human

Volumes: 100 μ l, 10 μ l

Purification: Affinity Purified

Host: Rabbit

Molecular Weight: 155 kDa

Background: **SMARCC1 / BAF155** (SWI/SNF related, matrix associated, actin dependent regulator of chromatin, subfamily c, member 1 / BRG1-associated factor 155) is involved in transcriptional activation and repression of select genes by chromatin remodeling. Component of multiple SWI/SNF chromatin remodeling complexes including Swi/Snf-A (BAF), Swi/Snf-B (PBAF), Brm, Brg1(I), WINAC, Brg1 (II), npBAF and nBAF.

Immunogen: This antibody was raised against a peptide within the N-terminal region of human SMARCC1 / BAF155.

Buffer: Purified IgG in PBS with 30% glycerol and 0.035% sodium azide. Sodium azide is highly toxic.

Application Notes:

Applications Validated by Active Motif:

ICC/IF: 1:2,000 dilution

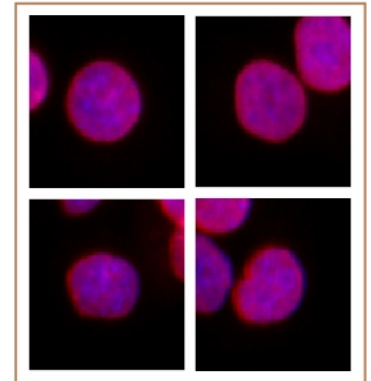
WB*: 1:500 - 1:1,000 dilution

The addition of 0.05% Tween 20 in the blocking buffer and primary antibody incubation buffer is recommended to aid in detection by Western blot. Individual optimization may be required.

*Note: many chromatin-bound proteins are not soluble in a low salt nuclear extract and fractionate to the pellet. Therefore, we recommend a High Salt / Sonication Protocol when preparing nuclear extracts for Western blot.

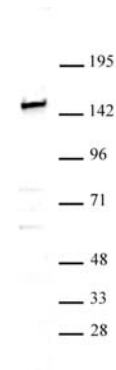
Storage and Guarantee: Some products may be shipped at room temperature. This will not affect their stability or performance. Avoid repeated freeze/thaw cycles by aliquoting items into single-use fractions for storage at -20°C for up to 2 years. Keep all reagents on ice when not in storage. This product is guaranteed for 12 months from date of receipt.

This product is for research use only and is not for use in diagnostic procedures.



SMARCC1 / BAF155 antibody (pAb) tested by Immunofluorescence.

Formaldehyde fixed HeLa cells stained with SMARCC1 / BAF155 antibody at a 1:2,000 dilution.



SMARCC1 / BAF155 antibody (pAb) tested by Western blot.

K-562 nuclear extract (30 μ g) probed with SMARCC1 / BAF155 antibody at a dilution of 1:500.