

PKM2 antibody (pAb)

Catalog Nos: 61423, 61424

RRID: AB_2793629

Isotype: IgG

Application(s): WB

Reactivity: Human

Volumes: 100 μ l, 10 μ l

Purification: Affinity Purified

Host: Rabbit

Molecular Weight: 60 kDa

Background: PKM2 (pyruvate kinase M2 isoform) is a glycolytic enzyme that catalyses the conversion of phosphoenolpyruvate to pyruvate. In mammals, the M1 isoform (PKM1) is expressed in most adult tissues. The M2 isoform (PKM2), an alternatively-spliced variant of M1, is expressed during embryonic development, is upregulated in human cancer cells and has been implicated in transcriptional regulation. Recently PKM2 has been described to bind to Histone H3 and phosphorylate threonine 11 (H3T11ph) which implicates PKM2 as an epigenetic regulator of gene expression.

Immunogen: This antibody was raised against a peptide within the C-terminal region of human PKM2.

Buffer: Purified IgG in PBS with 30% glycerol, 0.035% sodium azide and 0.2 mg/ml BSA. Sodium azide is highly toxic.

Application Notes:

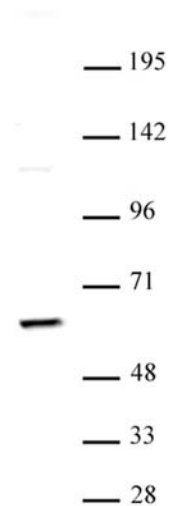
Applications Validated by Active Motif:

WB: 1:500 - 1:2,000 dilution

The addition of 0.05% Tween 20 in the blocking buffer and primary antibody incubation buffer is recommended to aid in detection by Western blot. Individual optimization may be required.

Storage and Guarantee: Some products may be shipped at room temperature. This will not affect their stability or performance. Avoid repeated freeze/thaw cycles by aliquoting items into single-use fractions for storage at -20°C for up to 2 years. Keep all reagents on ice when not in storage. This product is guaranteed for 12 months from date of receipt.

This product is for research use only and is not for use in diagnostic procedures.



PKM2 pAb tested by Western blot.

PKM2 detection by Western blot. The analysis was performed using 30 μ g HeLa whole cell extract and PKM2 at a 1:1,000 dilution.