

## KMT2E (MLL5) antibody (pAb)

**Catalog Nos:** 61447, 61448

**RRID:** AB\_2793641

**Isotype:** IgG

**Application(s):** WB

**Reactivity:** Human, Mouse

**Volumes:** 100  $\mu$ l, 10  $\mu$ l

**Purification:** Affinity Purified

**Host:** Rabbit

**Molecular Weight:** 85 kDa

**Background: KMT2E (MLL5)** (myeloid/lymphoid or mixed-lineage leukemia 5 (trithorax homolog, Drosophila / lysine N-methyltransferase 2E)) is a histone methyltransferase that specifically mono- and dimethylates 'Lys-4' of histone H3 (H3K4me1 and H3K4me2). H3 'Lys-4' methylation represents a specific tag for epigenetic transcriptional activation. Key regulator of hematopoiesis involved in terminal myeloid differentiation and in the regulation of hematopoietic stem cell (HSCs) self-renewal by a mechanism that involves DNA methylation. Plays an essential role in retinoic-acid-induced granulopoiesis by acting as a coactivator of RAR-alpha (RARA) in target gene promoters. Also acts as an important cell cycle regulator, participating in cell cycle regulatory network machinery at multiple cell cycle stages. Required to suppress inappropriate expression of S-phase-promoting genes and maintain expression of determination genes in quiescent cells. Overexpression inhibits cell cycle progression, while knockdown induces cell cycle arrest at both the G1 and G2/M phases.

**Immunogen:** This antibody was raised against a peptide within human KMT2E (MLL5).

**Buffer:** Purified IgG in PBS with 30% glycerol and 0.035% sodium azide. Sodium azide is highly toxic.

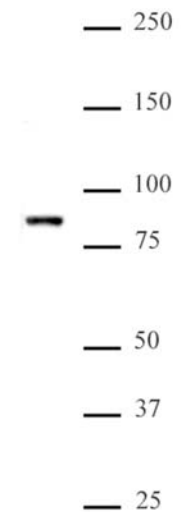
### Application Notes:

Applications Validated by Active Motif:

WB: 1:500 - 1:2,000 dilution

**Storage and Guarantee:** Some products may be shipped at room temperature. This will not affect their stability or performance. Avoid repeated freeze/thaw cycles by aliquoting items into single-use fractions for storage at -20°C for up to 2 years. Keep all reagents on ice when not in storage. This product is guaranteed for 12 months from date of receipt.

This product is for research use only and is not for use in diagnostic procedures.



### KMT2E (MLL5) (pAb) tested by Western blot.

Detection of KMT2E (MLL5) by Western blot analysis. Nuclear extract of mouse testis (40  $\mu$ g) was probed with KMT2E (MLL5) (pAb) at a 1:2,000 dilution.