

beta-Catenin antibody (pAb)

Catalog Nos: 61487, 61488

RRID: AB_2614973

Isotype: IgG

Application(s): IP, WB

Reactivity: Human

Volumes: 100 μ l, 10 μ l

Purification: Affinity Purified

Host: Rabbit

Molecular Weight: 90 kDa

Background: beta-Catenin is a key downstream component of the canonical Wnt signaling pathway, plays an important role in the regulation of cell adhesion and embryonic development. In the absence of Wnt, it forms a complex with AXIN1, AXIN2, APC, CSNK1A1 and GSK3B that promotes phosphorylation on N-terminal Ser and Thr residues and ubiquitination of beta-Catenin via BTRC and subsequent degradation by the proteasome. In the presence of Wnt ligand, beta-Catenin is not ubiquitinated and accumulates in the nucleus, where it acts as a coactivator for transcription factors of the TCF/LEF family, leading to activation of Wnt responsive genes.

Immunogen: This antibody was raised against a peptide within the N-terminal region of human beta-Catenin.

Buffer: Purified IgG in PBS with 30% glycerol and 0.035% sodium azide. Sodium azide is highly toxic.

Application Notes:

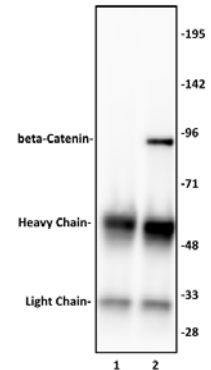
Applications Validated by Active Motif:

IP: 10 μ l per IP

WB: 1:500 - 1:2,000 dilution

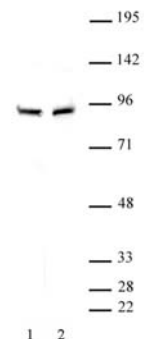
Storage and Guarantee: Some products may be shipped at room temperature. This will not affect their stability or performance. Avoid repeated freeze/thaw cycles by aliquoting items into single-use fractions for storage at -20°C for up to 2 years. Keep all reagents on ice when not in storage. This product is guaranteed for 12 months from date of receipt.

This product is for research use only and is not for use in diagnostic procedures.



beta-Catenin antibody (pAb) tested by Immunoprecipitation.

10 μ l of beta-Catenin antibody was used to immunoprecipitate beta-Catenin from 500 μ g of HeLa whole cell extract (lane 2). 10 μ l of rabbit IgG was used as a negative control (lane 1). The immunoprecipitated protein was detected by Western blotting using the beta-Catenin antibody at a dilution of 1:500.



beta-Catenin antibody (pAb) tested by Western blot.

Detection of beta-Catenin antibody by Western blot analysis.

Lane 1: A549 nuclear extract (30 μ g).

Lane 2: DU145 nuclear extract (20 μ g).

Both probed with beta-Catenin antibody at a dilution of 1:500.