

MED15 antibody (pAb)

Catalog Nos: 61589, 61590

RRID: AB_2793690

Isotype: IgG

Application(s): IP, WB

Reactivity: Human

Volumes: 100 µl, 10 µl

Purification: Affinity Purified

Host: Rabbit

Molecular Weight: 100 kDa

Background: **MED15** (mediator of RNA polymerase II transcription subunit 15) is a component of the Mediator complex, a coactivator involved in the regulated transcription of nearly all RNA polymerase II-dependent genes. Mediator functions as a bridge to convey information from gene-specific regulatory proteins to the basal RNA polymerase II transcription machinery. Mediator is recruited to promoters by direct interactions with regulatory proteins and serves as a scaffold for the assembly of a functional preinitiation complex with RNA polymerase II and the general transcription factors. Required for cholesterol-dependent gene regulation. Positively regulates the Nodal signaling pathway.

Immunogen: This antibody was raised against a peptide within the C-terminal region of human MED15.

Buffer: Purified IgG in PBS with 30% glycerol and 0.035% sodium azide. Sodium azide is highly toxic.

Application Notes:

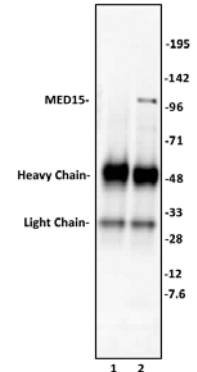
Applications Validated by Active Motif:

IP: 10 µl per IP

WB: 1:500 - 1:2,500 dilution

Storage and Guarantee: Some products may be shipped at room temperature. This will not affect their stability or performance. Avoid repeated freeze/thaw cycles by aliquoting items into single-use fractions for storage at -20°C for up to 2 years. Keep all reagents on ice when not in storage. This product is guaranteed for 12 months from date of receipt.

This product is for research use only and is not for use in diagnostic procedures.



MED15 antibody (pAb) tested by Immunoprecipitation.

10 µl of MED15 antibody was used to immunoprecipitate MED15 from 400 µg of HeLa whole cell extract (lane 2). 10 µl of rabbit IgG was used as a negative control (lane 1). The immunoprecipitated protein was detected by Western blotting using the MED15 antibody at a dilution of 1:1,000.



MED15 antibody (pAb) tested by Western blot.

HeLa whole-cell extract (20 µg) probed with MED15 antibody at a dilution of 1:1,000.