

NRF2 antibody (pAb)

Catalog Nos: 61599, 61600

RRID: AB_2793695

Isotype: IgG

Application(s): ChIP, ChIP-Seq, WB

Reactivity: Human

Volumes: 100 μ l, 10 μ l

Purification: Affinity Purified

Host: Rabbit

Molecular Weight: 96 kDa

Background: NRF2 (NF-E2-Related Factor 2) is a transcription activator that binds to antioxidant response (ARE) elements in the promoter regions of target genes. Important for the coordinated up-regulation of genes in response to oxidative stress. May be involved in the transcriptional activation of genes of the beta-globin cluster by mediating enhancer activity of hypersensitive site 2 of the beta-globin locus control region.

Immunogen: This antibody was raised against a peptide within human NRF2.

Buffer: Purified IgG in PBS with 30% glycerol and 0.035% sodium azide. Sodium azide is highly toxic.

Application Notes:

Applications Validated by Active Motif:

ChIP: 10 μ l per ChIP

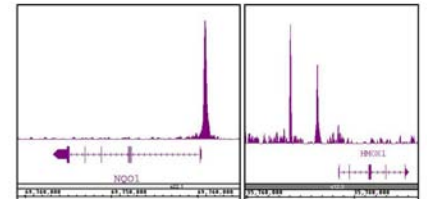
ChIP-Seq: 10 μ l each

WB: 1:500 - 1:1,000 dilution

ChIP-Seq validation was performed by Active Motif's Epigenetics Services; the complete data set is available in the UCSC Genome Browser by clicking [here](#).

Storage and Guarantee: Some products may be shipped at room temperature. This will not affect their stability or performance. Avoid repeated freeze/thaw cycles by aliquoting items into single-use fractions for storage at -20°C for up to 2 years. Keep all reagents on ice when not in storage. This product is guaranteed for 12 months from date of receipt.

This product is for research use only and is not for use in diagnostic procedures.



NRF2 antibody (pAb) tested by ChIP-Seq. ChIP was performed using the ChIP-IT[®] High Sensitivity Kit (Cat. No. 53040) with 30 μ g of chromatin from A549 cells and 4 μ l of antibody. ChIP DNA was sequenced on the Illumina HiSeq and 20 million sequence tags were mapped to identify NRF2 binding sites. The image shows binding across regions of chromosome 16 and 22. You can view the complete data set in the UCSC Genome Browser, starting at NQO1, [here](#).



NRF2 antibody (pAb) tested by Western blot. Nuclear extract of HepG2 cells (25 μ g) treated with tHBQ and probed with NRF2 antibody at a dilution of 1:500.