

NFATC2 antibody (pAb)

Catalog Nos: 61621, 61622

RRID: AB_2793706

Isotype: IgG

Application(s): IP, WB

Reactivity: Human

Volumes: 100 µl, 10 µl

Purification: Affinity Purified

Host: Rabbit

Molecular Weight: 120 kDa

Background: NFATC2 (Nuclear Factor Of Activated T-Cells, Cytoplasmic, Calcineurin-Dependent 2) plays a role in the inducible expression of cytokine genes in T-cells, especially in the induction of the IL-2, IL-3, IL-4, TNF-alpha or GM-CSF. Promotes invasive migration through the activation of GPC6 expression and WNT5A signaling pathway.

Immunogen: This antibody was raised against a peptide within the N-terminal region of human NFATC2.

Buffer: Purified IgG in PBS with 30% glycerol and 0.035% sodium azide. Sodium azide is highly toxic.

Application Notes:

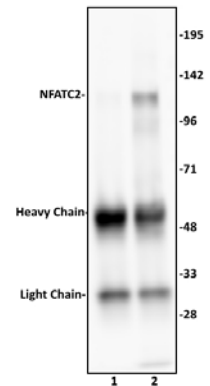
Applications Validated by Active Motif:

IP: 10 µl per IP

WB: 1:500 - 1:2,000 dilution

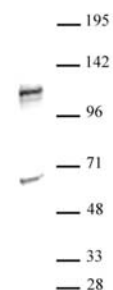
Storage and Guarantee: Some products may be shipped at room temperature. This will not affect their stability or performance. Avoid repeated freeze/thaw cycles by aliquoting items into single-use fractions for storage at -20°C for up to 2 years. Keep all reagents on ice when not in storage. This product is guaranteed for 12 months from date of receipt.

This product is for research use only and is not for use in diagnostic procedures.



NFATC2 antibody (pAb) tested by Immunoprecipitation.

10 µl of NFATC2 antibody was used to immunoprecipitate NFATC2 from 500 µg of Raji nuclear cell extract (lane 2). 10 µl of rabbit IgG was used as a negative control (lane 1). The immunoprecipitated protein was detected by Western blotting using the NFATC2 antibody at a dilution of 1:500.



NFATC2 antibody (pAb) tested by Western blot.

Detection of NFATC2 by Western blot analysis. NFATC2 was detected using a 1:500 dilution of NFATC2 (pAb) with 30 µg of Ramos nuclear extract.