

STAT2 antibody (pAb)

Catalog Nos: 61651, 61652

RRID: AB_2793720

Isotype: IgG

Application(s): IP, WB

Reactivity: Human

Volumes: 100 µl, 10 µl

Purification: Affinity Purified

Host: Rabbit

Molecular Weight: 110 kDa

Background: STAT2 (Signal Transducer And Activator Of Transcription 2, 113kDa) is a signal transducer and activator of transcription that mediates signaling by type I IFNs (IFN-alpha and IFN-beta). Following type I IFN binding to cell surface receptors, Jak kinases (TYK2 and JAK1) are activated, leading to tyrosine phosphorylation of STAT1 and STAT2. The phosphorylated STATs dimerize, associate with IRF9/ISGF3G to form a complex termed ISGF3 transcription factor, that enters the nucleus. ISGF3 binds to the IFN stimulated response element (ISRE) to activate the transcription of interferon stimulated genes, which drive the cell in an antiviral state.

Immunogen: This antibody was raised against a peptide within the C-terminal region of human STAT2.

Buffer: Purified IgG in PBS with 30% glycerol and 0.035% sodium azide. Sodium azide is highly toxic.

Application Notes:

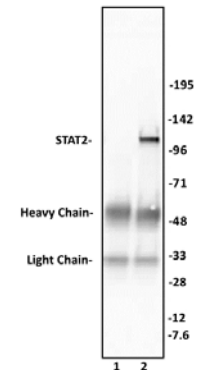
Applications Validated by Active Motif:

IP: 10 µl per IP

WB: 1:500 - 1:2,000 dilution

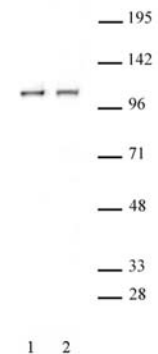
Storage and Guarantee: Some products may be shipped at room temperature. This will not affect their stability or performance. Avoid repeated freeze/thaw cycles by aliquoting items into single-use fractions for storage at -20°C for up to 2 years. Keep all reagents on ice when not in storage. This product is guaranteed for 12 months from date of receipt.

This product is for research use only and is not for use in diagnostic procedures.



STAT2 antibody (pAb) tested by Immunoprecipitation.

10 µl of STAT2 antibody was used to immunoprecipitate STAT2 from 400 µg of HeLa whole cell extract (lane 2). 10 µl of rabbit IgG was used as a negative control (lane 1). The immunoprecipitated protein was detected by Western blotting using the STAT2 antibody at a dilution of 1:1,000.



STAT2 antibody (pAb) tested by Western blot.

Whole cell extract (20 µg) of Jurkat cells (Lane 1) or HeLa cells (Lane 2) probed with STAT2 antibody at a 1:1,000 dilution.