

NCAPH2 antibody (mAb)

Catalog Nos: 61681, 61682

RRID: AB_2793733

Clone: 5F2G4

Isotype: IgG2a

Application(s): ICC, IF, WB

Reactivity: Human

Quantities: 100 µg, 10 µg

Purification: Protein G Chromatography

Host: Rat

Concentration: 1 µg/µl

Molecular Weight: 90 kDa

Background: **NCAPH2** (Non-SMC Condensin II Complex, Subunit H2) Regulatory subunit of the condensin-2 complex, a complex that seems to provide chromosomes with an additional level of organization and rigidity and in establishing mitotic chromosome architecture. May play a role in lineage-specific role in T-cell development. (By similarity)

Immunogen: This antibody was raised against a recombinant protein to human NCAPH2.

Buffer: Purified IgG in PBS with 30% glycerol and 0.035% sodium azide. Sodium azide is highly toxic.

Application Notes:

Applications Validated by Active Motif:

ICC/IF: 1 - 2 µg/ml dilution

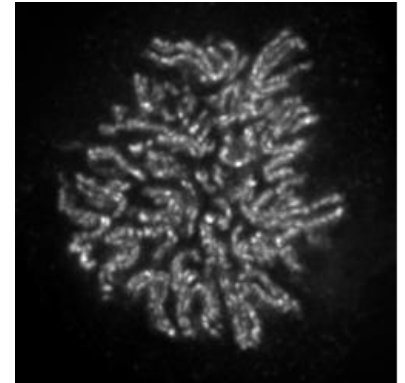
WB*: 0.5 - 2 µg/ml dilution

The addition of 0.1% Tween 20 in the blocking buffer and primary antibody incubation buffer is recommended to aid in detection by Western blot. Individual optimization may be required.

*Note: many chromatin-bound proteins are not soluble in a low salt nuclear extract and fractionate to the pellet. Therefore, we recommend a High Salt / Sonication Protocol when preparing nuclear extracts for Western blot.

Storage and Guarantee: Some products may be shipped at room temperature. This will not affect their stability or performance. Avoid repeated freeze/thaw cycles by aliquoting items into single-use fractions for storage at -20°C for up to 2 years. Keep all reagents on ice when not in storage. This product is guaranteed for 12 months from date of receipt.

This product is for research use only and is not for use in diagnostic procedures.



NCAPH2 antibody (mAb) (Clone 5F2G4) tested by immunofluorescence.

Formaldehyde fixed HeLa cell stained with the NCAPH2 antibody.



NCAPH2 antibody (mAb) (Clone 5F2G4) tested by Western blot.

NCAPH2 antibody detection by Western blot. The analysis was performed using 30 µg of HeLa nuclear extract and NCAPH2 antibody at a 1 µg/ml dilution.