

Chd5 antibody (mAb)

Catalog Nos: 61683, 61684

RRID: AB_2793734

Clone: 5A10

Isotype: IgG2a

Application(s): ICC, IF, WB

Reactivity: Human, Mouse

Quantities: 100 µg, 10 µg

Purification: Protein G Chromatography

Host: Rat

Concentration: 1 µg/µl

Molecular Weight: 260 kDa

Background: Chd5 (Chromodomain Helicase DNA Binding Protein 5) is member of the CHD subfamily of chromatin remodeling SWI/SNF proteins, containing chromodomains and a SNF2-like ATPase/helicase domain, that play a role in chromatin remodeling and gene transcription. Chd5 is also a potential tumor suppressor that may play a role in neuronal development.

Immunogen: This antibody was raised against a peptide within the C-terminal region of mouse Chd5.

Buffer: Purified IgG in PBS with 30% glycerol and 0.035% sodium azide. Sodium azide is highly toxic.

Application Notes:

Applications Validated by Active Motif:

ICC/IF: 2 - 5 µg/ml dilution

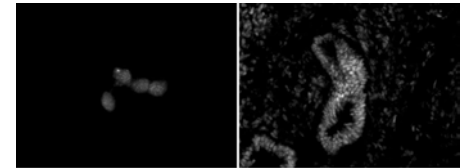
WB*: 1 - 2 µg/ml dilution

The addition of 0.1% Tween 20 in the blocking buffer and primary antibody incubation buffer is recommended to aid in detection by Western blot. Individual optimization may be required.

*Note: many chromatin-bound proteins are not soluble in a low salt nuclear extract and fractionate to the pellet. Therefore, we recommend a High Salt / Sonication Protocol when preparing nuclear extracts for Western blot.

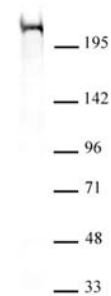
Storage and Guarantee: Some products may be shipped at room temperature. This will not affect their stability or performance. Avoid repeated freeze/thaw cycles by aliquoting items into single-use fractions for storage at -20°C for up to 2 years. Keep all reagents on ice when not in storage. This product is guaranteed for 12 months from date of receipt.

This product is for research use only and is not for use in diagnostic procedures.



Chd5 antibody (mAb) (Clone 5A10) tested by immunofluorescence.

Left: HeLa cells. Right: E12.5 mouse gut. Both stained with Chd5 antibody.



Chd5 antibody (mAb) (Clone 5A10) tested by Western blot.

Chd5 antibody detection by Western blot. The analysis was performed using 40 µg of HeLa nuclear extract and Chd5 antibody at a 2 µg/ml dilution.