

## AbFlex® Rad21 antibody (rAb)

**Catalog Nos:** 91245, 91246**RRID:** AB\_2793817**Isotype:** IgG2a**Application(s):** IF, WB**Reactivity:** Human, Mouse**Quantities:** 100 µg, 10 µg**Purification:** Protein A Chromatography**Host:** Mouse**Concentration:** 1 µg/µl**Molecular Weight:** 100 kDa

**Background:** AbFlex® antibodies are recombinant antibodies (rAbs) that have been generated using defined DNA sequences to produce highly specific, reproducible antibodies. Each AbFlex antibody contains a 6xHis Tag, a Biotinylation Tag for enzymatic biotin conjugation using the biotin ligase, BirA, and a sortase recognition motif (LPXTG) to attach a variety of labels directly to the antibody including fluorophores, enzymatic substrates (HRP, AP), peptides, drugs as well as solid supports. AbFlex® Rad21 antibody was expressed as full-length IgG with mouse immunoglobulin heavy and light chains (IgG2a isotype) in mammalian 293 cells

Rad21 (HR21, MCD1, NXP1, hHR21) is highly similar to the gene product of *S. pombe* Rad21, a gene involved in the repair of DNA double-strand breaks, as well as in chromatid cohesion during mitosis. Rad21 is a nuclear phosphoprotein, which becomes hyperphosphorylated in cell cycle M phase. The highly regulated association of Rad21 with mitotic chromatin specifically at the centromere region suggests its role in sister chromatid cohesion in mitotic cells.

**Immunogen:** This antibody was raised against recombinant protein corresponding to the N-terminal half of mouse Rad21.

**Buffer:** Purified IgG in 140 mM HEPES, pH 7.5, 70 mM NaCl, 32 mM NaOAc, 0.035% sodium azide, 30% glycerol. Sodium azide is highly toxic.

**Application Notes:**

Applications Validated by Active Motif:

IF: 0.25 - 1 µg/ml

WB\*: 0.5- 2 µg/ml

\*Note: many chromatin-bound proteins are not soluble in a low salt nuclear extract and fractionate to the pellet. Therefore, we recommend a High Salt / Sonication Protocol when preparing nuclear extracts for Western Blot.

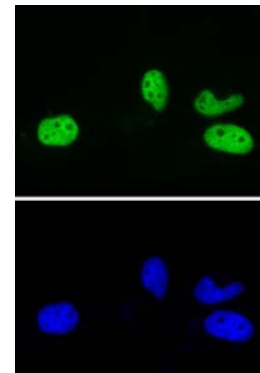
AbFlex® recombinant antibodies are genetically derived from DNA sequences of parental hybridoma clones. For details on the parental clone, see Catalog No. 39383.

**Storage and Guarantee:** Some products may be shipped at room temperature. This will not affect their stability or performance. Avoid repeated freeze/thaw cycles by aliquoting items into single-use fractions for storage at -20°C for up to 2 years. Keep all reagents on ice when not in storage. This product is guaranteed for 12 months from date of receipt.

The file cannot be found:  
91245-00418001-1.jpg

AbFlex® Rad21 antibody (rAb) tested by Western blot.

20 µg of HeLa cell nuclear extract was run on SDS-PAGE and probed with AbFlex Rad21 antibody at 1 µg/ml.



AbFlex® Rad21 antibody (rAb) tested by Immunofluorescence. HeLa cells stained with 0.5 µg /mL of AbFlex Rad21 antibody (rAb) (Top Panel) or DAPI (Lower Panel) followed by anti-mouse IgG-488.