

SUMOLink™

simple, effective *in vitro* SUMOylation of proteins with proven controls

Active Motif's SUMOLink Kits provide a fast, simple method for generating SUMOylated proteins *in vitro*. Using the SUMOylation enzyme cascade, the carboxy-terminal SUMO-1, -2 or -3 peptide substrates are covalently linked to specific lysine residues on the target protein via isopeptide bonds. Applications of the kit include the investigation of SUMOylation on enzyme function, understanding the role of SUMOylation in the regulation of cellular processes and the identification of novel proteins as targets for SUMO (small ubiquitin-like modifier). SUMOLink Kits also provide all the reagents required for performing *in vitro* SUMOylation of target proteins and include positive and negative controls to help ensure success. For additional information please give us a call or visit www.activemotif.com.

SUMOLink advantages

- Simple, effective method for SUMO conjugation and detection of SUMOylated proteins
- Study either SUMO-1, or SUMO-2 & SUMO-3 activity
- Positive control p53 protein and antibody provided to ensure success
- Wild-type and mutated SUMO proteins are provided
- Versatile – study SUMOylation of cell or tissue extracts, or recombinant protein

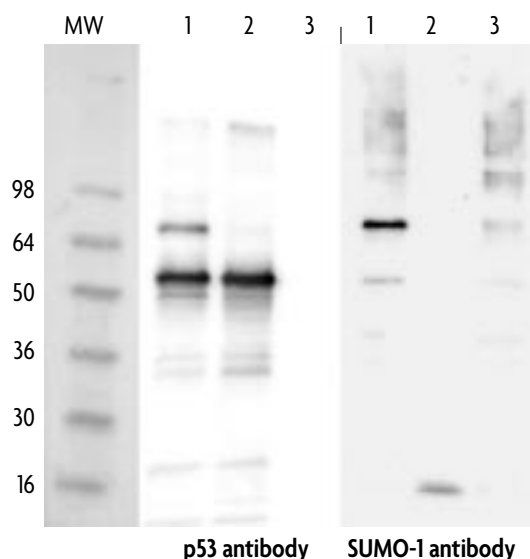


Figure 1: Specific SUMO-1 labeling of p53 by SUMOLink.

Western blot analysis of *in vitro* SUMOylation of p53 protein by wild-type and mutated isoforms of SUMO-1: The two Western blots were incubated with p53 antibody (1:5000 dilution) and SUMO-1 antibody (1:4000 dilution). The p53 protein is SUMOylated only by the wild-type SUMO-1 protein.

Lanes 1: Wild-type SUMO-1 protein conjugation reaction.

Lanes 2: Mutated SUMO-1 protein conjugation reaction.

Lanes 3: No p53 control protein used in a wild-type SUMO-1 protein conjugation reaction.

CONTENTS & STORAGE

SUMO-1 or SUMO-2 and SUMO-3 wild-type and mutated proteins, SUMO-1 or SUMO-2/3 antibodies, p53 control protein, p53 antibody, SUMOylation buffer, Protein buffer, E1 activating enzyme and E2 conjugating enzyme. Reagent storage conditions vary from -20°C to -80°C, see manual for details. All reagents are guaranteed stable for 6 months when stored properly.

Product	Format	Catalog No.
SUMOLink™ SUMO-1 Kit	20 rxns	40120
SUMOLink™ SUMO-2/3 Kit	20 rxns	40220