

## Chromeo™ 642 Goat anti-Rabbit IgG

**Catalog No:** 15044, 15064

**Format:** 1 mg, 100 µg

### Chemical Properties:

**Contents:** 1 mg (Catalog No. 15044) or 0.1 mg (Catalog No. 15064) of Chromeo™ 642 conjugated Goat anti-Rabbit IgG (H+L). The antibody concentration is 2 mg/ml in 0.01 M potassium phosphate, 0.15 M sodium chloride pH 7.4, containing 2 mM sodium azide.

**Specificity:** This antibody was purified by immunoaffinity chromatography. It reacts with whole molecular rabbit IgG and the light chains of other rabbit immunoglobulins. No cross-reactivity with non-immunoglobulin serum proteins was observed.

**Fluorescent Properties:** Chromeo™ 642 is spectrally similar to Cy5®. The conjugated antibodies exhibit superior luminescent properties and stability towards photobleaching. The Chromeo™ 642 conjugated antibodies have absorption and emission maxima of approximately 642 and 666 nm which are compatible with common excitation sources and filter sets.

**Molar extinction Coefficient:** 180,000 M<sup>-1</sup>cm<sup>-1</sup> (measured at A<sub>max</sub>)

**Quantum Yield:** ~15%

**Excitation Wavelength Range:** 630 to 650 nm

**Emission Wavelength Range:** 650 to 670 nm

### Applications:

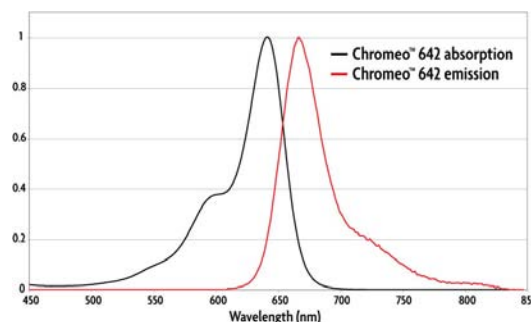
Immunofluorescence: 1:1000 to 1:2000 dilution

Plate-based assays: 1:800 to 1:1000 dilution

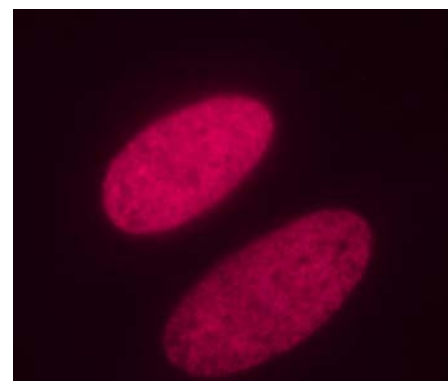
**Quality Control:** This antibody has been quality control-tested by spectrophotometrical evaluation, by immunohistochemistry (IHC) and by plate-based assays.

**Storage and Guarantee:** Some products may be shipped at room temperature. This will not affect their stability or performance. Upon receipt, unconjugated antibodies may be stored at -20°C for up to 2 years. Fluorophore- & enzyme-conjugated antibodies should be stored at 4°C. Fluorophore-conjugated antibodies should be protected from light. Keep reagents on ice when not in storage; to avoid repeated freeze/thaw cycles, we recommend aliquoting items that will be stored frozen into single-use fractions prior to freezing. This product is guaranteed for 6 months from date of receipt.

This product is for research use only and is not for use in diagnostic procedures



**Absorption and emission spectra of Chromeo 642 Dye.**



**Chromeo 642 staining of etoposide-treated HeLa cells.**

HeLa cells were treated with 100 µM etoposide for 6 hours prior to fixation with methanol. The histone-variant H2AX was stained with Histone H2AX phospho Ser139 rabbit pAb (Cat. No.