

MAXwash™ Washing Medium

Catalog No.: 15254

Format: 1000 ml

Applications: Immunofluorescence, Immunohistochemistry, Western blotting & ELISA

Formulation: Proprietary washing buffer containing 0.001% sodium azide.

Storage: Store at 4°C. Guaranteed stable for 6 months when stored properly.

Concentration: MAXwash is to be used at the delivered concentration (1X).

Description: MAXwash is a proprietary formulation designed to eliminate non-specific primary and secondary antibody binding.

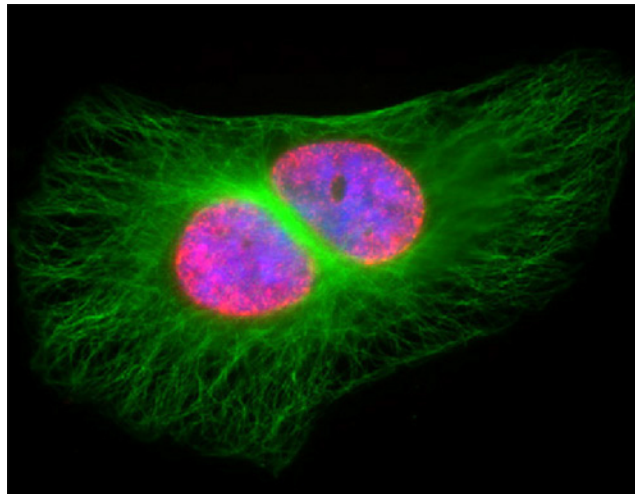
Quality Control: MAXwash was tested in immunofluorescence for effectiveness in eliminating off-target antibody binding.

Instructions: MAXwash is to be used at the concentration supplied for washing cells after fixation and blocking steps, as well as incubations with primary and secondary antibodies. The amount needed will depend upon the type of tissue culture plate you are using. If you are using 6-well plates, 1 ml 1X MAXwash is used per well for each wash step.

Typically, one wash is performed after fixing cells with methanol and blocking with MAXblock™ Blocking Medium (Cat. No. 15252), or similar. Three washes are usually performed following incubation with primary antibody diluted in MAXbind™ Staining Medium (Cat. No. 15253), or similar. Four washes are usually performed following incubation with diluted secondary antibody.

Each wash step is generally performed for 10 minutes on a rocking platform. The optimal number and duration of wash steps may need to be adjusted depending upon your cell line, primary and secondary antibodies.

MAXwash is for *in vitro* research use only and is not intended for use in humans or animals.



Immunofluorescence staining with MAX Stain™ reagents.

HeLa cells were stained using the MAX Stain line of products for immunofluorescence and immunostaining. Green: alpha Tubulin Mouse mAb (Clone 5-B-1-2) (Cat. No. 39527). Red: Histone H3 trimethyl Lys27 Rabbit pAb (Cat. No. 39155). Blue: DAPI. In addition to MAXwash, MAXblock, MAXbind™ Staining Medium (Cat. No. 15253) and MAXfluor™ DAPI Mounting Medium (Cat. No. 15257) were used in the creation of this image.