

## APEXL2 antibody (pAb)

**Catalog No:** 39201

**RRID:** AB\_2793182

**Isotype:** IgG

**Application(s):** WB

**Reactivity:** Human

**Volume:** 200 µl

**Purification:** Affinity Purified

**Host:** Rabbit

**Molecular Weight:** 54 kDa

**Background:** APEXL2 (APEX2,apurinic endonuclease-like 2 or apyrimidinic endonuclease-like 2) is a multifunctional DNA repair enzyme. The main role of APE is to create a nick in the phosphodiester backbone of the AP site that is created when DNA glycosylase removes the damaged base. Four types of APE (AP endonucleases) are classified according to their site of incision. APEXL2 (APEX2) is a Class II AP endonuclease that cleaves the phosphodiester backbone 5' to the AP site; it may also be present in the mitochondria.

**Immunogen:** This APEXL2 antibody was raised against a synthetic peptide corresponding to human APEXL2.

**Buffer:** PBS containing 0.02% sodium azide. Sodium azide is highly toxic.

**Application Notes:**

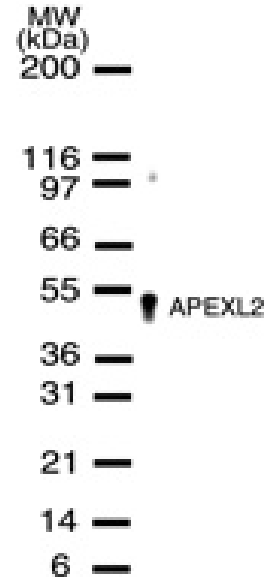
Applications Validated by Active Motif:

WB: 1:500 - 1:1,000 dilution

For optimal results, primary antibody incubations should be performed at room temperature. The addition of 0.1% Tween 20 to all blocking solutions may also reduce background. Individual optimization may be required.

**Storage and Guarantee:** Some products may be shipped at room temperature. This will not affect their stability or performance. Avoid repeated freeze/thaw cycles by aliquoting items into single-use fractions for storage at -20°C for up to 2 years. Keep all reagents on ice when not in storage. This product is guaranteed for 12 months from date of receipt.

This product is for research use only and is not for use in diagnostic procedures.



**APEXL2 pAb tested by Western blot.**  
 APEXL2 detection by Western blot. The analysis of APEXL2 was performed using HeLa whole-cell extract and APEXL2 pAb at a 1:500 dilution.