

SAP30 antibody (pAb)

Catalog Nos: 39731, 39732

RRID: AB_2561021

Isotype: Serum

Application(s): ChIP, ChIP-Seq, WB

Reactivity: Human

Volumes: 100 µl, 10 µl

Purification: None

Host: Rabbit

Molecular Weight: 30 kDa

Background: SAP30, also known as Sin3A-associated protein, 30kDa, is part of the SIN3 corepressor complex, that also includes SIN3, SAP18, HDAC1, HDAC2, RbAp46 and RbAp48. SAP30 is involved in the functional recruitment of the Sin3-histone deacetylase complex to a specific subset of N-CoR corepressor complexes.

Immunogen: This SAP30 antibody (pAb) was raised against recombinant full-length human SAP30 protein.

Buffer: Rabbit serum containing 30% glycerol and 0.035% sodium azide. Sodium azide is highly toxic.

Application Notes:

Validated Applications:

ChIP: 5 µl per ChIP

ChIP-Seq: 5 µl each

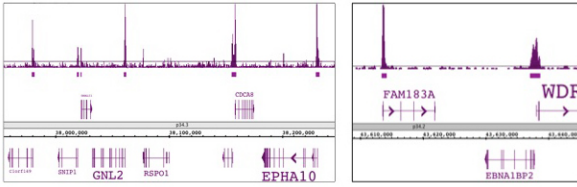
WB: 1:500 dilution

Storage and Guarantee: Some products may be shipped at room temperature. This will not affect their stability or performance. Upon receipt, unconjugated antibodies may be stored at -20°C for up to 2 years. Fluorophore- & enzyme-conjugated antibodies should be stored at 4°C. Fluorophore-conjugated antibodies should be protected from light. Keep reagents on ice when not in storage; to avoid repeated freeze/thaw cycles, we recommend aliquoting items that will be stored frozen into single-use fractions prior to freezing. This product is guaranteed for 6 months from date of receipt.

This product is for research use only and is not for use in diagnostic procedures.

SAP30 antibody (pAb) tested by ChIP-Seq.

ChIP was performed using the ChIP-IT[®] High Sensitivity Kit (Cat. No. 53040) with chromatin from the K-562 human myelogenous leukemia cell line (4.5 million cells) and 5 ul of antibody. ChIP DNA was sequenced on the Illumina HiSeq and 30 million sequence tags were mapped to identify SAP30 binding sites. The image on the left shows SAP30 binding at transcriptional start sites across a 2.4 million bp region on chromosome 1. The image on the right is zoomed in to show SAP30 binding at two other start sites.



SAP30 antibody (pAb) tested by Western blot.

Detection of SAP30 by Western blot analysis. Lane 1: Whole cell extract of A549 cells (20 µg). Lane 2: Nuclear extract of HeLa cells (20 µg). Both were probed with SAP30 antibody (pAb) at a 1:500 dilution.

