

## KLF5 antibody (pAb)

---

**Catalog Nos:** 61099, 61100

**RRID:** AB\_2614941

**Isotype:** IgG

**Application(s):** ChIP, ChIP-Seq, ICC, IF, WB

**Reactivity:** Human, Mouse

**Volumes:** 100 µl, 10 µl

**Purification:** Affinity Purified

**Host:** Rabbit

**Concentration:** 0.78 µg/µl

**Molecular Weight:** 65 kDa

---

**Background:** **KLF5** (Kruppel-like factor 5, IKLF, Basic transcription element-binding protein 2, BTEB2) is a zinc-finger transcription factor that plays a role in cell proliferation, differentiation, cell cycle regulation, angiogenesis, and carcinogenesis and is especially important in epithelial cells. **KLF5** (along with KLF2 and KLF4) are highly expressed in undifferentiated mouse embryonic stem cells and downregulated during early stages of differentiation. KLF5 and KLF2 can substitute for KLF4 in the reprogramming of differentiated cells into stem cells. KLF5 has a pro-proliferative role in cells and loss of both alleles of KLF5 is embryonic lethal.

**Immunogen:** This KLF5 antibody was raised against a peptide derived from the N-terminus of mouse KLF5 (Krueppel-like factor 5).

**Buffer:** Purified IgG in 70 mM Tris (pH 8), 105 mM NaCl, 31 mM glycine, 0.07 mM EDTA, 30% glycerol and 0.035% sodium azide. Sodium azide is highly toxic.

**Application Notes:**

Applications Validated by Active Motif:

ChIP: 5 - 10 µl per ChIP

ChIP-Seq: 5 - 10 µl each

ICC/IF: 1:2,000 dilution

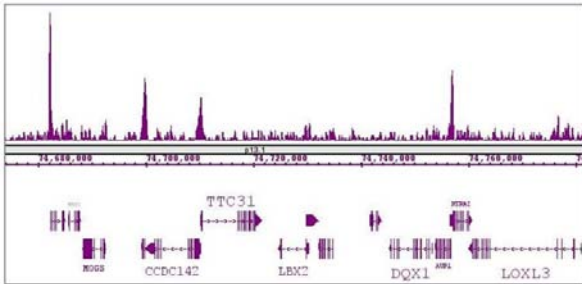
WB\*: 1:500 - 1:5,000 dilution

ChIP-Seq validation was performed by Active Motif's Epigenetics Services; the complete data set is available in the UCSC Genome Browser by clicking [here](#).

\*Note: many chromatin-bound proteins are not soluble in a low salt nuclear extract and fractionate to the pellet. Therefore, we recommend a High Salt / Sonication Protocol when preparing nuclear extracts for Western Blot.

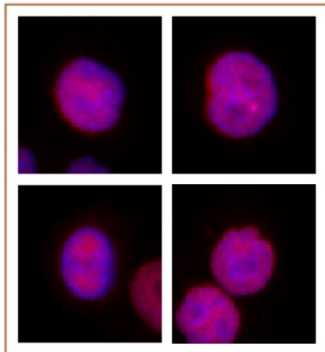
**Storage and Guarantee:** Some products may be shipped at room temperature. This will not affect their stability or performance. Avoid repeated freeze/thaw cycles by aliquoting items into single-use fractions for storage at -20°C for up to 2 years. Keep all reagents on ice when not in storage. This product is guaranteed for 12 months from date of receipt.

This product is for research use only and is not for use in diagnostic procedures.



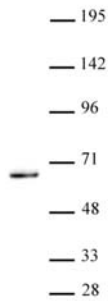
**KLF5 antibody (pAb) tested by ChIP-Seq.**

ChIP was performed using the ChIP-IT<sup>®</sup> High Sensitivity Kit (Cat. No. 53040) with 30 ug of chromatin from an adenocarcinoma cell line and 5 µl of antibody. ChIP DNA was sequenced on the Illumina HiSeq and 24 million sequence tags were mapped to identify KLF5 binding sites. The image shows binding across a region of chromosome 2. You can view the complete data set in the UCSC Genome Browser, starting at this specific location, [here](#).



**KLF5 antibody (pAb) tested by Immunofluorescence.**

Formaldehyde fixed HeLa cells stained with KLF5 antibody at a 1:2,000 dilution.



**KLF5 antibody (pAb) tested by Western Blot.**

Nuclear extract of K-562 cells (20 µg) probed with the KLF5 antibody (pAb) at a dilution of 1:1,000.