

## STAT5B antibody (pAb)

**Catalog Nos:** 61137, 61138

**RRID:** AB\_2614997

**Isotype:** IgG

**Application(s):** IP, WB

**Reactivity:** Human

**Quantities:** 100 µg, 10 µg

**Purification:** Affinity Purified

**Host:** Rabbit

**Concentration:** 1 µg/µl

**Molecular Weight:** 90 kDa

**Background:** STAT5A and STAT5B are encoded by separate genes but are 90% identical. They mediate gene expression in response to IL-2, IL-3, IL-7 GM-CSF, erythropoietin, thrombopoietin, and different growth hormones. The STAT5A/B signaling pathway is involved in the transition of organ-confined prostate cancer to hormone-refractory disease. This implies that the active JAK2-STAT5A/B signaling pathway potentially provides the means for pharmacological intervention of clinical prostate cancer progression.

**Immunogen:** This STAT5B antibody was raised against a peptide in the C-terminal region of human STAT5B.

**Buffer:** Purified IgG in PBS with 30% glycerol and 0.035% sodium azide. Sodium azide is highly toxic.

### Application Notes:

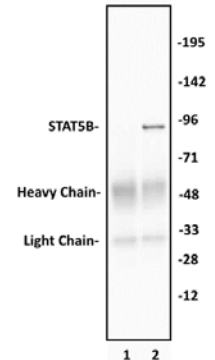
Applications Validated by Active Motif:

IP: 10 µg per IP

WB: 0.5 - 2 µg/ml dilution

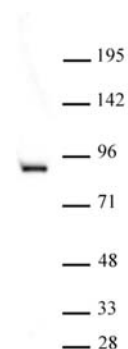
**Storage and Guarantee:** Some products may be shipped at room temperature. This will not affect their stability or performance. Avoid repeated freeze/thaw cycles by aliquoting items into single-use fractions for storage at -20°C for up to 2 years. Keep all reagents on ice when not in storage. This product is guaranteed for 12 months from date of receipt.

This product is for research use only and is not for use in diagnostic procedures.



### STAT5B antibody (pAb) tested by Immunoprecipitation.

10 µg of STAT5B antibody was used to immunoprecipitate STAT5B from 400 µg of K562 cytosolic cell extract (lane 2). 10 µl of rabbit IgG was used as a negative control (lane 1). The immunoprecipitated protein was detected by Western blotting using the STAT5B antibody at a dilution of 1 µg/ml.



### STAT5B antibody (pAb) tested by Western blot.

STAT5B antibody detection by Western blot. The analysis was performed using K-562 cytosolic-cell extract (25 µg) and STAT5B antibody (pAb) at a 1 µg/ml dilution.