

## Notch3 antibody (mAb)

**Catalog Nos:** 61149, 61150

**RRID:** AB\_2793527

**Clone:** NIZ 8G5

**Isotype:** IgG2a

**Application(s):** WB

**Reactivity:** Human

**Quantities:** 100 µg, 10 µg

**Purification:** Protein G Chromatography

**Host:** Rat

**Concentration:** 1 µg/µl

**Molecular Weight:** 90 & 270 kDa

**Background:** Notch3 is a member of the Notch family of receptors, which make up a highly conserved cell signaling system. Notch3 functions as a ligand-activated transcription factor that directly transduces extracellular signals in the cell surface into changes in gene expression in the nucleus. Notch3 is membrane bound, serving as an extracellular receptor for the Delta and Serrate family of ligands. Upon activation, the intracellular domain is cleaved and rapidly translocates into the nucleus where it forms a transcriptional complex with the RBP-J DNA binding protein and activates gene expression via recruitment of co-activators of the MAML family. Notch receptors play a critical role in cell fate specification during development and participate in multiple biological processes. Notch signaling is required for undifferentiated embryonic stem cells (ESCs) to participate in the formation of all three embryonic germ layers.

**Immunogen:** This Notch3 antibody was raised against a recombinant protein corresponding to the intracytoplasmic portion of human Notch3.

**Buffer:** Purified IgG in PBS with 30% glycerol and 0.035% sodium azide. Sodium azide is highly toxic.

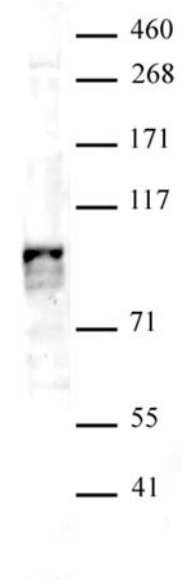
### Application Notes:

Applications Validated by Active Motif:

WB: 2 µg/ml dilution

**Storage and Guarantee:** Some products may be shipped at room temperature. This will not affect their stability or performance. Avoid repeated freeze/thaw cycles by aliquoting items into single-use fractions for storage at -20°C for up to 2 years. Keep all reagents on ice when not in storage. This product is guaranteed for 12 months from date of receipt.

This product is for research use only and is not for use in diagnostic procedures.



### Notch3 antibody (mAb) tested by Western blot.

Detection of Notch3 by Western blot. The analysis was performed using 50 µg HeLa whole-cell extract and Notch3 mAb at a 2 µg/ml dilution.