

## Histone H4 antibody (pAb)

**Catalog Nos:** 61199, 61200

**RRID:** AB\_2793550

**Isotype:** IgG

**Application(s):** WB

**Reactivity:** Human, Wide Range Predicted

**Quantities:** 100 µg, 10 µg

**Purification:** Protein A Chromatography

**Host:** Rabbit

**Concentration:** 1 µg/µl

**Molecular Weight:** 8 kDa

**Background:** Histone H4 is one of the core components of the nucleosome. The nucleosome is the smallest subunit of chromatin and consists of 147 base pairs of DNA wrapped around an octamer of core histone proteins (two each of Histone H2A, Histone H2B, Histone H3 and Histone H4). Histone H1 is a linker histone, present at the interface between the nucleosome core and DNA entry/exit points; it is responsible for establishing higher-order chromatin structure. Chromatin is subject to a variety of chemical modifications, including post-translational modifications of the histone proteins and the methylation of cytosine residues in the DNA. Reported histone modifications include acetylation, methylation, phosphorylation, ubiquitylation, glycosylation, ADP-ribosylation, carbonylation and SUMOylation; they play a major role in regulating gene expression.

**Immunogen:** This Histone H4 antibody was raised against a full-length recombinant *Xenopus* Histone H4.

**Buffer:** Purified IgG in PBS with 30% glycerol and 0.035% sodium azide. Sodium azide is highly toxic. For your convenience, an unpurified serum version (Catalog No. 39269) of this antibody is also available.

### Application Notes:

Validated Applications:

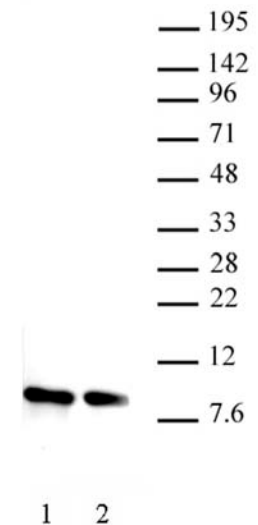
WB: 0.5 - 2 µg/ml dilution

Published Applications:

WB

**Storage and Guarantee:** Some products may be shipped at room temperature. This will not affect their stability or performance. Avoid repeated freeze/thaw cycles by aliquoting items into single-use fractions for storage at -20°C for up to 2 years. Keep all reagents on ice when not in storage. This product is guaranteed for 12 months from date of receipt.

This product is for research use only and is not for use in diagnostic procedures.



**Histone H4 antibody tested by Western blot.**  
Lane 1: Nuclear extract (20 µg) of HeLa cells.  
Lane 2: 200 ng of recombinant *Xenopus* Histone H4. Both probed with the Histone H4 antibody at 1 µg/ml.