

## EDF1 antibody (pAb)

**Catalog Nos:** 61257, 61258

**RRID:** AB\_2615048

**Isotype:** IgG

**Application(s):** IP, WB

**Reactivity:** Human

**Volumes:** 100 µl, 10 µl

**Purification:** Affinity Purified

**Host:** Rabbit

**Molecular Weight:** 18 kDa

**Background:** The EDF1 (endothelial differentiation-related factor 1, MBF1) gene encodes a protein that may regulate endothelial cell differentiation. This protein has been found to act as a transcriptional coactivator by interconnecting the general transcription factor TATA element-binding protein (TBP) and gene-specific activators. It also enhances the DNA-binding activity of ATF1, ATF2, CREB1 and NR5A1.

**Immunogen:** This EDF1 antibody was raised against a peptide within the N-terminal region of human EDF1.

**Buffer:** Purified IgG in PBS with 30% glycerol and 0.035% sodium azide. Sodium azide is highly toxic.

### Application Notes:

Applications Validated by Active Motif:

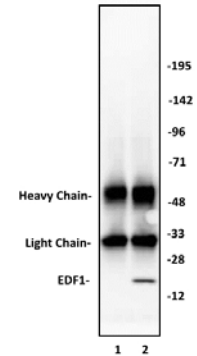
IP: 10 µl per IP

WB\*: 1:500 dilution

\*Note: many chromatin-bound proteins are not soluble in a low salt nuclear extract and fractionate to the pellet. Therefore, we recommend a High Salt / Sonication Protocol when preparing nuclear extracts for Western blot.

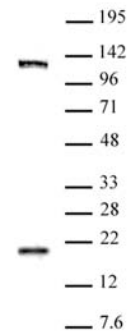
**Storage and Guarantee:** Some products may be shipped at room temperature. This will not affect their stability or performance. Avoid repeated freeze/thaw cycles by aliquoting items into single-use fractions for storage at -20°C for up to 2 years. Keep all reagents on ice when not in storage. This product is guaranteed for 12 months from date of receipt.

This product is for research use only and is not for use in diagnostic procedures.



### EDF1 antibody (pAb) tested by Immunoprecipitation.

10 µl of EDF1 antibody was used to immunoprecipitate EDF1 from 250 µg of HeLa nuclear cell extract (lane 2). 10 µl of rabbit IgG was used as a negative control (lane 1). The immunoprecipitated protein was detected by Western blotting using the EDF1 antibody at a dilution of 1:500.



### EDF1 antibody (pAb) tested by Western blot

Nuclear extract of HeLa cells (30 µg) probed with EDF1 antibody (1:500).