

JMJD3 / KDM6B antibody (mAb)

Catalog Nos: 61387, 61388**RRID:** AB_2793615**Clone:** 67-A2**Isotype:** IgG1**Application(s):** WB**Reactivity:** Human, Mouse**Quantities:** 100 µg, 10 µg**Purification:** Protein A Chromatography**Host:** Mouse**Concentration:** 1 µg/µl**Molecular Weight:** 150 kDa

Background: **JMJD3 / KDM6B** (Jumonji domain-containing protein 3 lysine (K)-specific demethylase 6B) Histone demethylase that specifically demethylates 'Lys-27' of histone H3, thereby playing a central role in histone code. Demethylates trimethylated and dimethylated H3 'Lys-27'. Plays a central role in regulation of posterior development, by regulating HOX gene expression. Involved in inflammatory response by participating in macrophage differentiation in case of inflammation by regulating gene expression and macrophage differentiation.

Immunogen: This antibody was raised against a recombinant protein corresponding to amino acids 1028-1684 of human JMJD3 / KDM6B.

Buffer: Purified IgG in PBS with 30% glycerol and 0.035% sodium azide. Sodium azide is highly toxic.

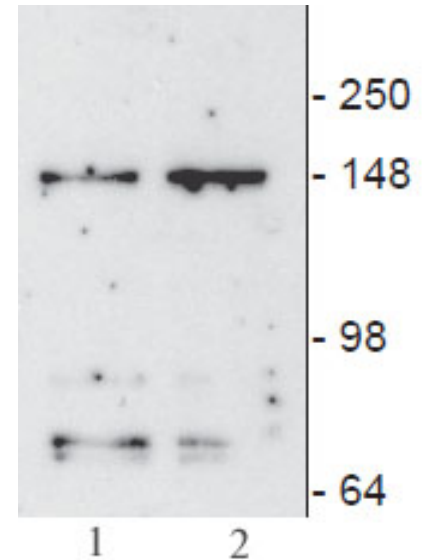
Application Notes:

Applications Validated by Active Motif:

WB: 0.5 - 2 µg/ml dilution

Storage and Guarantee: Some products may be shipped at room temperature. This will not affect their stability or performance. Avoid repeated freeze/thaw cycles by aliquoting items into single-use fractions for storage at -20°C for up to 2 years. Keep all reagents on ice when not in storage. This product is guaranteed for 12 months from date of receipt.

This product is for research use only and is not for use in diagnostic procedures.

**JMJD3/ KDM6B antibody (mAb) (Clone 67-A2) tested by Western blot.**

JMJD3/ KDM6B detection by Western blot. The analysis was performed using cell lysate from BJ cells (lane 1) and BJ cells irradiated (lane 2).