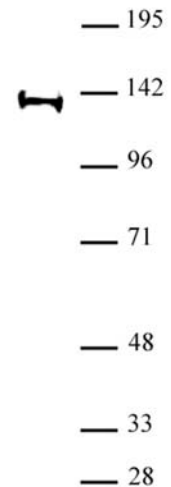


Supt16H / Spt16 antibody (pAb)

Catalog Nos: 61441, 61442**RRID:** AB_2793638**Isotype:** IgG**Application(s):** WB**Reactivity:** Human**Volumes:** 100 µl, 10 µl**Purification:** Affinity Purified**Host:** Rabbit**Molecular Weight:** 140 kDa

Background: **Supt16H / Spt16** (suppressor of Ty 16 homolog (*S. cerevisiae*)) is a component of the FACT complex, a general chromatin factor that acts to reorganize nucleosomes. The FACT complex is involved in multiple processes that require DNA as a template such as mRNA elongation, DNA replication and DNA repair. During transcription elongation the FACT complex acts as a histone chaperone that both destabilizes and restores nucleosomal structure. It facilitates the passage of RNA polymerase II and transcription by promoting the dissociation of one histone H2A-H2B dimer from the nucleosome, then subsequently promotes the reestablishment of the nucleosome following the passage of RNA polymerase II. The FACT complex is probably also involved in phosphorylation of 'Ser-392' of p53/TP53 via its association with CK2 (casein kinase II). Also involved in vitamin D-coupled transcription regulation via its association with the WINAC complex, a chromatin-remodeling complex recruited by vitamin D receptor (VDR), which is required for the ligand-bound VDR-mediated transrepression of the CYP27B1 gene (By similarity).



Immunogen: This antibody was raised against a synthetic peptide containing human Supt16H / Spt16.

Buffer: Purified IgG in PBS with 30% glycerol and 0.035% sodium azide. Sodium azide is highly toxic.

Application Notes:

Applications Validated by Active Motif:

WB*: 1:500 - 1:2,000 dilution

The addition of 0.05% Tween 20 in the blocking buffer and primary antibody incubation buffer is recommended to aid in detection by Western blot. Individual optimization may be required.

*Note: many chromatin-bound proteins are not soluble in a low salt nuclear extract and fractionate to the pellet. Therefore, we recommend a High Salt / Sonication Protocol when preparing nuclear extracts for Western blot.

Storage and Guarantee: Some products may be shipped at room temperature. This will not affect their stability or performance. Avoid repeated freeze/thaw cycles by aliquoting items into single-use fractions for storage at -20°C for up to 2 years. Keep all reagents on ice when not in storage. This product is guaranteed for 12 months from date of receipt.

This product is for research use only and is not for use in diagnostic procedures.

Supt16H / Spt16 (pAb) tested by Western blot.

Supt16H / Spt16 detection by Western blot. The analysis of Supt16H / Spt16 was performed using K-562 nuclear extract (30 µg) and Supt16H / Spt16 (pAb) at a 1:500 dilution.