

STAT6 antibody (pAb)

Catalog Nos: 61547, 61548

RRID: AB_2793675

Isotype: IgG

Application(s): WB

Reactivity: Human

Volumes: 100 μ l, 10 μ l

Purification: Affinity Purified

Host: Rabbit

Molecular Weight: 100 & 85 kDa

Background: STAT6 (signal transducer and activator of transcription 6) is a member of the STAT family of transcription factors. In response to cytokines and growth factors, STAT family members are phosphorylated by the receptor associated kinases, and then form homo- or heterodimers that translocate to the cell nucleus where they act as transcription activators. STAT6 plays a central role in exerting IL4 mediated biological responses.

Immunogen: This antibody was raised against a peptide within the C-terminal region of human STAT6. This antibody detects two isoforms of STAT6.

Buffer: Purified IgG in PBS with 30% glycerol and 0.035% sodium azide. Sodium azide is highly toxic.

Application Notes:

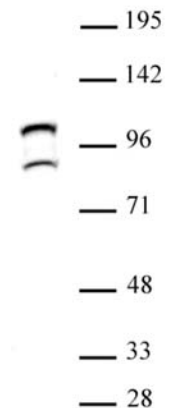
Applications Validated by Active Motif:

WB: 1:1,000 - 1:2,000 dilution

The addition of 0.05% Tween 20 in the blocking buffer and primary antibody incubation buffer is recommended to aid in detection by Western blot. Individual optimization may be required.

Storage and Guarantee: Some products may be shipped at room temperature. This will not affect their stability or performance. Avoid repeated freeze/thaw cycles by aliquoting items into single-use fractions for storage at -20°C for up to 2 years. Keep all reagents on ice when not in storage. This product is guaranteed for 12 months from date of receipt.

This product is for research use only and is not for use in diagnostic procedures.



STAT6 antibody (pAb) tested by Western blot.

STAT6 detection by Western blot. The analysis was performed using 30 μ g Raji cytoplasmic cell extract and STAT6 antibody at a 1:500 dilution. This antibody detects two isoforms of STAT6.