

ACTL6B antibody (pAb)

Catalog Nos: 61691, 61692

RRID: AB_2793737

Isotype: IgG

Application(s): WB

Reactivity: Human

Volumes: 100 µl, 10 µl

Purification: Affinity Purified

Host: Rabbit

Molecular Weight: 50 kDa

Background: ACTL6B (Actin-Like 6B) Belongs to the chromatin remodeling brain-specific BAF (bBAF) complex, as such plays a role in remodeling mononucleosomes in an ATP-dependent fashion. Belongs to the neuron-specific chromatin remodeling complex (nBAF complex) and is required for postmitotic neural development and dendritic outgrowth. During neural development a switch from a stem/progenitor to a post-mitotic chromatin remodeling mechanism occurs as neurons exit the cell cycle and become committed to their adult state. The transition from proliferating neural stem/progenitor cells to post-mitotic neurons requires a switch in subunit composition of the npBAF and nBAF complexes. As neural progenitors exit mitosis and differentiate into neurons, npBAF complexes which contain ACTL6A/BAF53A and PHF10/BAF45A, are exchanged for homologous alternative ACTL6B/BAF53B and DPF1/BAF45B or DPF3/BAF45C subunits in neuron-specific complexes (nBAF). The npBAF complex is essential for the self-renewal/proliferative capacity of the multipotent neural stem cells. The nBAF complex along with CREST plays a role regulating the activity of genes essential for dendrite growth. ACTL6B/BAF53B is not essential for assembly of the nBAF complex but is required for targeting the complex and CREST to the promoter of genes essential for dendritic growth (By similarity).

Immunogen: This antibody was raised against a peptide within the N-terminal region of human ACTL6B.

Buffer: Purified IgG in PBS with 30% glycerol and 0.035% sodium azide. Sodium azide is highly toxic.

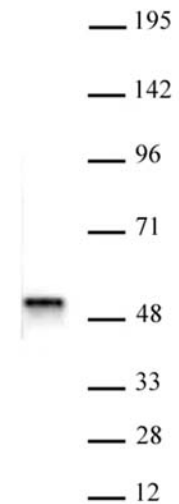
Application Notes:

Applications Validated by Active Motif:

WB: 1:250 - 1:500 dilution

Storage and Guarantee: Some products may be shipped at room temperature. This will not affect their stability or performance. Avoid repeated freeze/thaw cycles by aliquoting items into single-use fractions for storage at -20°C for up to 2 years. Keep all reagents on ice when not in storage. This product is guaranteed for 12 months from date of receipt.

This product is for research use only and is not for use in diagnostic procedures.



ACTL6B antibody (pAb) tested by Western blot.

Whole cell extract of SH-SY5Y cells (12 µg) probed with ACTL6B antibody (pAb) at a dilution of 1:500.