

AATF / Che-1 antibody (mAb)

Catalog Nos: 61789, 61790

RRID: AB_2793767

Clone: 1B2D8

Isotype: IgG2a

Application(s): IF, WB

Reactivity: Human, Mouse

Quantities: 100 µg, 10 µg

Purification: Protein A Chromatography

Host: Rat

Concentration: 1 µg/µl

Background: AATF/Che-1, or Apoptosis-antagonizing Transcription Factor is a key regulator of apoptosis through its interaction with MAP3K12 (DLK), as well as regulation of gene transcription and cell proliferation through interaction with RNA polymerase II. AATF/Che-1 may promote cell proliferation by acting as a competitor of histone deacetylase 1 (HDAC1) interaction with the growth inhibiting protein pRb. AATF / Che-1 binding to pRb may displace HDAC1 from RB1/E2F complexes, leading to activation of E2F target genes and cell cycle progression.

Immunogen: This antibody was raised against peptide comprising amino acids 1-39 of mouse AATF (Apoptosis-antagonizing transcription factor) (NP_062790).

Buffer: Purified IgG in PBS with 30% glycerol and 0.035% sodium azide. Sodium azide is highly toxic.

Application Notes:

Applications Validated by Active Motif:

WB*: 2 - 4 µg/ml

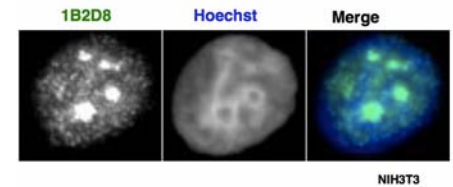
IF: 1:100 - 1:500 dilution

For optimal results, primary antibody incubations should be performed at room temperature. The addition of 0.1% Tween 20 to all blocking solutions may also reduce background. Individual optimization may be required.

*Note: many chromatin-bound proteins are not soluble in a low salt nuclear extract and fractionate to the pellet. Therefore, we recommend a High Salt / Sonication Protocol when preparing nuclear extracts for Western blot.

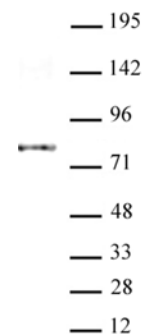
Storage and Guarantee: Some products may be shipped at room temperature. This will not affect their stability or performance. Avoid repeated freeze/thaw cycles by aliquoting items into single-use fractions for storage at -20°C for up to 2 years. Keep all reagents on ice when not in storage. This product is guaranteed for 12 months from date of receipt.

This product is for research use only and is not for use in diagnostic procedures.



AATF / Che-1 antibody (mAb) tested by immunofluorescence.

Left: Formaldehyde-fixed NIH3T3 cells stained with AATF / Che-1 antibody. Center: same cells stained with Hoechst (DNA stain). Right: merge of images.



AATF / Che-1 antibody (mAb) tested by Western Blot.

AATF / Che-1 was detected in 20 µg of HeLa cell nuclear extract with AATC / Che-1 antibody at 2 µg / µl. MW: 80 kDa